

ETFDH Rabbit pAb

Catalog No.: A6585

1 Publications

Basic Information

Observed MW

64kDa

Calculated MW

68kDa

Category

Primary antibody

Applications

ELISA, WB

Cross-Reactivity

Human, Mouse, Rat

Background

This gene encodes a component of the electron-transfer system in mitochondria and is essential for electron transfer from a number of mitochondrial flavin-containing dehydrogenases to the main respiratory chain. Mutations in this gene are associated with glutaric acidemia. Alternatively spliced transcript variants that encode distinct isoforms have been observed.

Recommended Dilutions

WB 1:1000 - 1:5000

Immunogen Information

Gene ID

2110

Swiss Prot

Q16134

Immunogen

Recombinant fusion protein containing a sequence corresponding to amino acids 318-617 of human ETFDH (NP_004444.2).

Synonyms

MADD; ETFQO; ETFDH

Contact

 | 400-999-6126

 | cn.market@abclonal.com.cn

 | www.abclonal.com.cn

Product Information

Source

Rabbit

Isotype

IgG

Purification

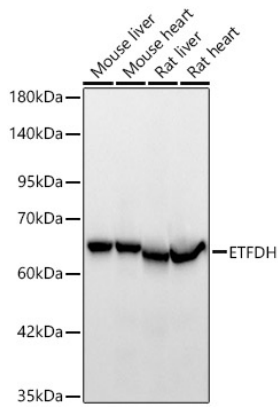
Affinity purification

Storage

Store at -20°C. Avoid freeze / thaw cycles.

Buffer: PBS with 0.02% sodium azide, 50% glycerol, pH7.3.

Validation Data



Western blot analysis of various lysates using ETFDH Rabbit pAb (A6585) at 1:3000 dilution.
Secondary antibody: HRP Goat Anti-Rabbit IgG (H+L)(AS014) at 1:10000 dilution.
Lysates / proteins: 25 µg per lane.
Blocking buffer: 3 % nonfat dry milk in TBST.
Detection: ECL Basic Kit (RM00020).
Exposure time: 15s.