

FCN1 Rabbit pAb

Catalog No.: A6587

Basic Information

Observed MW

38kDa

Calculated MW

35kDa

Category

Primary antibody

Applications

WB, ELISA

Cross-Reactivity

Human, Mouse, Rat

Background

The ficolin family of proteins are characterized by the presence of a leader peptide, a short N-terminal segment, followed by a collagen-like region, and a C-terminal fibrinogen-like domain. The collagen-like and the fibrinogen-like domains are also found separately in other proteins such as complement protein C1q, C-type lectins known as collectins, and tenascins. However, all these proteins recognize different targets, and are functionally distinct. Ficolin 1 encoded by FCN1 is predominantly expressed in the peripheral blood leukocytes, and has been postulated to function as a plasma protein with elastin-binding activity.

Recommended Dilutions

WB 1:500 - 1:2000

ELISA Recommended starting concentration is 1 µg/mL. Please optimize the concentration based on your specific assay requirements.

Immunogen Information

Gene ID

2219

Swiss Prot

O00602

Immunogen

Recombinant protein (or fragment). This information is considered to be commercially sensitive.

Synonyms

FCNM; FCN1

Contact

☎ | 400-999-6126

✉ | cn.market@abclonal.com.cn

🌐 | www.abclonal.com.cn

Product Information

Source

Rabbit

Isotype

IgG

Purification

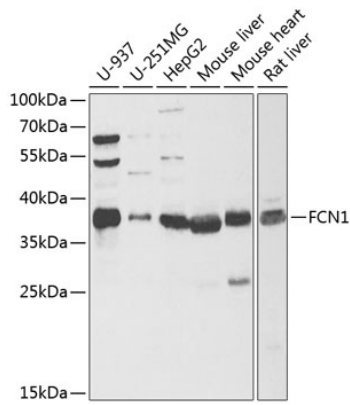
Affinity purification

Storage

Store at -20°C. Avoid freeze / thaw cycles.

Buffer: PBS containing 50% glycerol, preserved with proclin300 or sodium azide (as specified on the Certificate of Analysis), pH 7.3.

Validation Data



Western blot analysis of various lysates using FCN1 Rabbit pAb (A6587) at 1:1000 dilution. Secondary antibody: HRP-conjugated Goat anti-Rabbit IgG (H+L) (AS014) at 1:10000 dilution. Lysates/proteins: 25µg per lane. Blocking buffer: 3% nonfat dry milk in TBST. Detection: ECL Enhanced Kit (RM00021). Exposure time: 90s.