

GABBR2 Rabbit pAb

Catalog No.: A6594 **2 Publications**

Basic Information

Observed MW

122kDa

Calculated MW

106kDa

Category

Primary antibody

Applications

ELISA, WB

Cross-Reactivity

Human

Background

The multi-pass membrane protein encoded by this gene belongs to the G-protein coupled receptor 3 family and GABA-B receptor subfamily. The GABA-B receptors inhibit neuronal activity through G protein-coupled second-messenger systems, which regulate the release of neurotransmitters, and the activity of ion channels and adenylyl cyclase. This receptor subunit forms an active heterodimeric complex with GABA-B receptor subunit 1, neither of which is effective on its own. Allelic variants of this gene have been associated with nicotine dependence.

Recommended Dilutions

WB 1:500 - 1:2000

Immunogen Information

Gene ID

9568

Swiss Prot

O75899

Immunogen

Recombinant fusion protein containing a sequence corresponding to amino acids 60-310 of human GABBR2 (NP_005449.5).

Synonyms

HG20; DEE59; GPR51; EIEE59; GPRC3B; NDPLHS; GABABR2; HRIHFB2099; GABBR2

Contact

☎ | 400-999-6126

✉ | cn.market@abclonal.com.cn

🌐 | www.abclonal.com.cn

Product Information

Source

Rabbit

Isotype

IgG

Purification

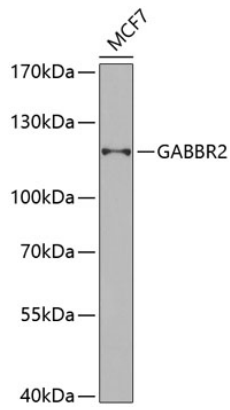
Affinity purification

Storage

Store at -20°C. Avoid freeze / thaw cycles.

Buffer: PBS with 0.02% sodium azide, 50% glycerol, pH7.3.

Validation Data



Western blot analysis of lysates from MCF-7 cells, using GABBR2 Rabbit pAb (A6594) at 1:1000 dilution.
Secondary antibody: HRP Goat Anti-Rabbit IgG (H+L) (AS014) at 1:10000 dilution.
Lysates/proteins: 25µg per lane.
Blocking buffer: 3% nonfat dry milk in TBST.
Detection: ECL Basic Kit (RM00020).
Exposure time: 120s.