

# GLP2R Rabbit pAb

Catalog No.: A6602

1 Publications

## Basic Information

### Observed MW

63kDa

### Calculated MW

63kDa

### Category

Primary antibody

### Applications

ELISA, WB, IHC-P

### Cross-Reactivity

Human, Mouse

## Background

This gene encodes a G protein-coupled receptor that is closely related to the glucagon receptor and binds to glucagon-like peptide-2 (GLP2). Signalling through GLP2 stimulates intestinal growth and increases villus height in the small intestine, concomitant with increased crypt cell proliferation and decreased enterocyte apoptosis.

## Recommended Dilutions

WB 1:100 - 1:500

IHC-P 1:50 - 1:200

## Immunogen Information

### Gene ID

9340

### Swiss Prot

O95838

### Immunogen

Recombinant fusion protein containing a sequence corresponding to amino acids 460-553 of human GLP2R (NP\_004237.1).

### Synonyms

GLP2R

## Contact

☎ | 400-999-6126

✉ | [cn.market@abclonal.com.cn](mailto:cn.market@abclonal.com.cn)

🌐 | [www.abclonal.com.cn](http://www.abclonal.com.cn)

## Product Information

### Source

Rabbit

### Isotype

IgG

### Purification

Affinity purification

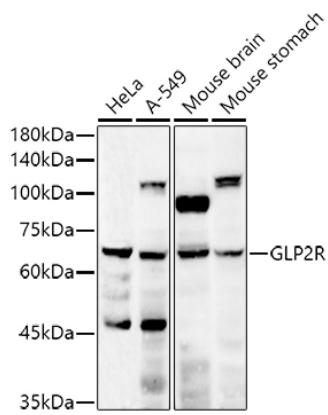
### Storage

Store at -20°C. Avoid freeze / thaw cycles.

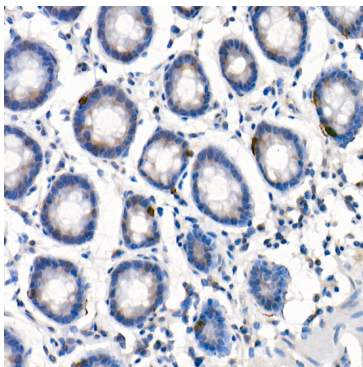
Buffer: PBS with 0.05% proclin300, 50% glycerol, pH7.3.

## Validation Data

---



Western blot analysis of various lysates using GLP2R Rabbit pAb (A6602) at 1:500 dilution.  
Secondary antibody: HRP Goat Anti-Rabbit IgG (H+L) (AS014) at 1:10000 dilution.  
Lysates/proteins: 25µg per lane.  
Blocking buffer: 3% nonfat dry milk in TBST.  
Detection: ECL Enhanced Kit (RM00021).  
Exposure time: 180s.



Immunohistochemistry analysis of paraffin-embedded Human colon using GLP2R Rabbit pAb (A6602) at dilution of 1:20 (40x lens). Perform high pressure antigen retrieval with 10 mM citrate buffer pH 6.0 before commencing with IHC staining protocol.