

GPAM Rabbit pAb

Catalog No.: A6610 **1 Publications**

Basic Information

Observed MW

94 kDa

Calculated MW

94 kDa

Category

Primary antibody

Applications

WB, ELISA

Cross-Reactivity

Mouse, Rat

Background

This gene encodes a mitochondrial enzyme which prefers saturated fatty acids as its substrate for the synthesis of glycerolipids. This metabolic pathway's first step is catalyzed by the encoded enzyme. Two forms for this enzyme exist, one in the mitochondria and one in the endoplasmic reticulum. Two alternatively spliced transcript variants have been described for this gene.

Recommended Dilutions

WB 1:500 - 1:1000

ELISA Recommended starting concentration is 1 µg/mL. Please optimize the concentration based on your specific assay requirements.

Immunogen Information

Gene ID

57678

Swiss Prot

Q9HCL2

Immunogen

Recombinant protein (or fragment). This information is considered to be commercially sensitive.

Synonyms

GPAT; GPAT1; GPAM

Contact

 | 400-999-6126

 | cn.market@abclonal.com.cn

 | www.abclonal.com.cn

Product Information

Source

Rabbit

Isotype

IgG

Purification

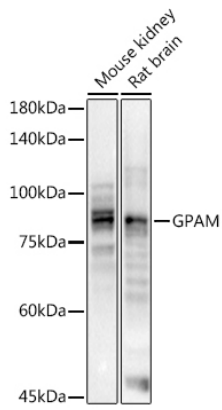
Affinity purification

Storage

Store at -20°C. Avoid freeze / thaw cycles.

Buffer: PBS containing 50% glycerol, preserved with proclin300 or sodium azide (as specified on the Certificate of Analysis), pH 7.3.

Validation Data



Western blot analysis of various lysates using (A6610) at 1:1000 dilution.
Secondary antibody: HRP-conjugated Goat anti-Rabbit IgG (H+L) (AS014) at 1:10000 dilution.
Lysates/proteins: 25 μ g per lane.
Blocking buffer: 3% nonfat dry milk in TBST.
Detection: ECL Basic Kit (RM00020).
Exposure time: 30s.