

# HAPLN1 Rabbit pAb

Catalog No.: A6616 **1 Publications**

## Basic Information

### Observed MW

50kDa

### Calculated MW

40kDa

### Category

Primary antibody

### Applications

ELISA, WB, IHC-P

### Cross-Reactivity

Human, Mouse, Rat

## Background

Predicted to enable hyaluronic acid binding activity. Predicted to be an extracellular matrix structural constituent conferring compression resistance. Predicted to be involved in central nervous system development and skeletal system development. Colocalizes with collagen-containing extracellular matrix.

## Recommended Dilutions

|              |                |
|--------------|----------------|
| <b>WB</b>    | 1:500 - 1:2000 |
| <b>IHC-P</b> | 1:100 - 1:500  |

## Immunogen Information

### Gene ID

1404

### Swiss Prot

P10915

### Immunogen

Recombinant fusion protein containing a sequence corresponding to amino acids 165-354 of human HAPLN1 (NP\_001875.1).

### Synonyms

CRT1; CRTL1; HAPLN1

## Contact

☎ | 400-999-6126

✉ | [cn.market@abclonal.com.cn](mailto:cn.market@abclonal.com.cn)

🌐 | [www.abclonal.com.cn](http://www.abclonal.com.cn)

## Product Information

### Source

Rabbit

### Isotype

IgG

### Purification

Affinity purification

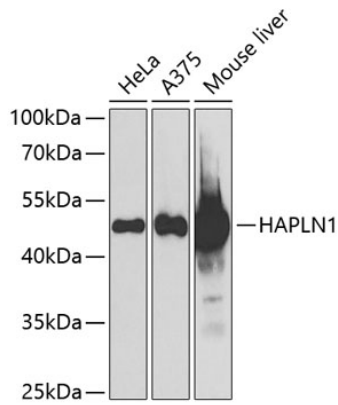
### Storage

Store at -20°C. Avoid freeze / thaw cycles.

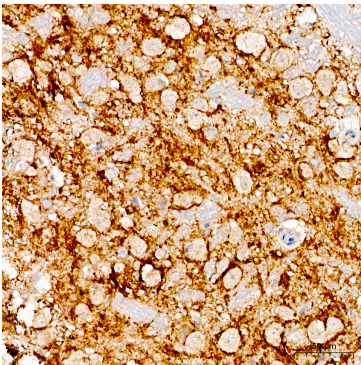
Buffer: PBS with 0.02% sodium azide, 50% glycerol, pH 7.3.

## Validation Data

---



Western blot analysis of various lysates using HAPLN1 Rabbit pAb (A6616) at 1:1000 dilution.  
Secondary antibody: HRP-conjugated Goat anti-Rabbit IgG (H+L) (AS014) at 1:10000 dilution.  
Lysates/proteins: 25µg per lane.  
Blocking buffer: 3% nonfat dry milk in TBST.  
Detection: ECL Basic Kit (RM00020).  
Exposure time: 90s.



Immunohistochemistry analysis of paraffin-embedded Rat brain tissue using HAPLN1 Rabbit pAb (A6616) at a dilution of 1:300 (40x lens). High pressure antigen retrieval performed with 0.01M Citrate Buffer(pH 6.0) prior to IHC staining.