

KHDRBS3 Rabbit pAb

Catalog No.: A6637

Basic Information

Observed MW

39kDa

Calculated MW

39kDa

Category

Primary antibody

Applications

ELISA, WB, IF/ICC

Cross-Reactivity

Human, Mouse

Background

Enables RNA binding activity; identical protein binding activity; and protein domain specific binding activity. Predicted to be involved in regulation of alternative mRNA splicing, via spliceosome and spermatogenesis. Located in nucleoplasm. Part of protein-containing complex.

Recommended Dilutions

WB 1:500 - 1:2000

IF/ICC 1:50 - 1:100

Immunogen Information

Gene ID

10656

Swiss Prot

O75525

Immunogen

Recombinant fusion protein containing a sequence corresponding to amino acids 177-346 of human KHDRBS3 (NP_006549.1).

Synonyms

Etle; SALP; SLM2; SLM-2; TSTAR; T-STAR; etoile; KHDRBS3

Contact

☎ | 400-999-6126

✉ | cn.market@abclonal.com.cn

🌐 | www.abclonal.com.cn

Product Information

Source

Rabbit

Isotype

IgG

Purification

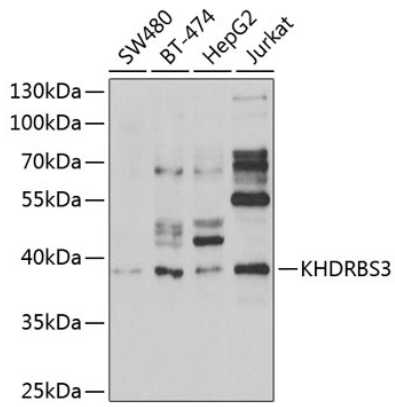
Affinity purification

Storage

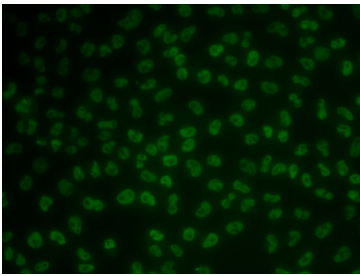
Store at -20°C. Avoid freeze / thaw cycles.

Buffer: PBS with 0.02% sodium azide, 50% glycerol, pH 7.3.

Validation Data



Western blot analysis of extracts of various cell lines, using KHDRBS3 antibody (A6637) at 1:1000 dilution.
Secondary antibody: HRP Goat Anti-Rabbit IgG (H+L) (AS014) at 1:10000 dilution.
Lysates/proteins: 25µg per lane.
Blocking buffer: 3% nonfat dry milk in TBST.
Detection: ECL Enhanced Kit (RM00021).
Exposure time: 90s.



Immunofluorescence analysis of MCF7 cells using KHDRBS3 antibody (A6637).