

KIF3A Rabbit pAb

Catalog No.: A6639

Basic Information

Observed MW

80kDa

Calculated MW

80kDa

Category

Primary antibody

Applications

ELISA, WB, IHC-P, IF/ICC, IP

Cross-Reactivity

Human, Mouse, Rat

Background

Enables protein phosphatase binding activity; small GTPase binding activity; and spectrin binding activity. Involved in protein localization to cell junction and protein transport. Located in centriole and centrosome. Part of kinesin II complex. Colocalizes with spindle microtubule.

Recommended Dilutions

WB 1:500 - 1:2000

IHC-P 1:100 - 1:500

IF/ICC 1:50 - 1:200

IP 0.5µg-4µg antibody for
200µg-400µg extracts of
whole cells

Immunogen Information

Gene ID

11127

Swiss Prot

Q9Y496

Immunogen

Recombinant fusion protein containing a sequence corresponding to amino acids 430-699 of human KIF3A (NP_008985.3).

Synonyms

FLA10; KLP-20; KIF3A

Contact

 | 400-999-6126

 | cn.market@abclonal.com.cn

 | www.abclonal.com.cn

Product Information

Source

Rabbit

Isotype

IgG

Purification

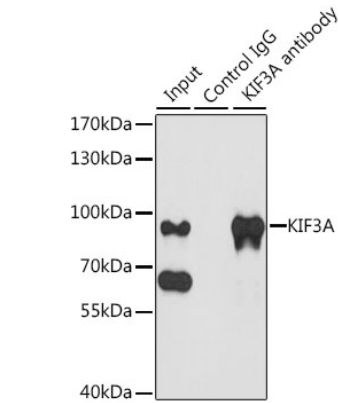
Affinity purification

Storage

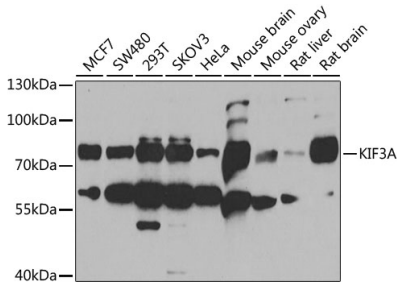
Store at -20°C. Avoid freeze / thaw cycles.

Buffer: PBS with 0.02% sodium azide, 50% glycerol, pH7.3.

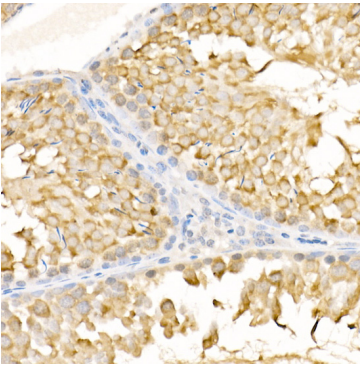
Validation Data



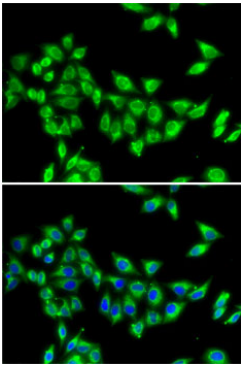
Immunoprecipitation analysis of 200 µg extracts of MCF-7 cells, using 3 µg KIF3A antibody (A6639). Western blot was performed from the immunoprecipitate using KIF3A antibody (A6639) at a dilution of 1:1000.



Western blot analysis of various lysates using KIF3A Rabbit pAb (A6639) at 1:1000 dilution. Secondary antibody: HRP Goat Anti-Rabbit IgG (H+L) (AS014) at 1:10000 dilution. Lysates/proteins: 25µg per lane. Blocking buffer: 3% nonfat dry milk in TBST. Detection: ECL Basic Kit (RM00020). Exposure time: 90s.



Immunohistochemistry analysis of KIF3A in paraffin-embedded rat testis using KIF3A Rabbit pAb (A6639) at dilution of 1:500 (40x lens). Perform high pressure antigen retrieval with 10 mM citrate buffer pH 6.0 before commencing with IHC staining protocol.



Immunofluorescence analysis of MCF7 cells using KIF3A Rabbit pAb (A6639). Secondary antibody: Cy3 Goat Anti-Rabbit IgG (H+L) (AS007) at 1:500 dilution. Blue: DAPI for nuclear staining.