

# MAPKAP1 Rabbit pAb

Catalog No.: A6648

## Basic Information

### Observed MW

69kDa/71kDa

### Calculated MW

59kDa

### Category

Primary antibody

### Applications

ELISA, WB, IHC-P

### Cross-Reactivity

Human, Mouse, Rat

## Background

This gene encodes a protein that is highly similar to the yeast SIN1 protein, a stress-activated protein kinase. Alternatively spliced transcript variants encoding distinct isoforms have been described. Alternate polyadenylation sites as well as alternate 3' UTRs have been identified for transcripts of this gene.

## Recommended Dilutions

WB	1:500 - 1:1000
IHC-P	1:50 - 1:200

## Immunogen Information

### Gene ID

79109

### Swiss Prot

Q9BPZ7

### Immunogen

Recombinant fusion protein containing a sequence corresponding to amino acids 360-522 of MAPKAP1 (NP\_001006618.1).

### Synonyms

MIP1; SIN1; JC310; SIN1b; SIN1g; MAPKAP1

## Contact

 | 400-999-6126

 | [cn.market@abclonal.com.cn](mailto:cn.market@abclonal.com.cn)

 | [www.abclonal.com.cn](http://www.abclonal.com.cn)

## Product Information

### Source

Rabbit

### Isotype

IgG

### Purification

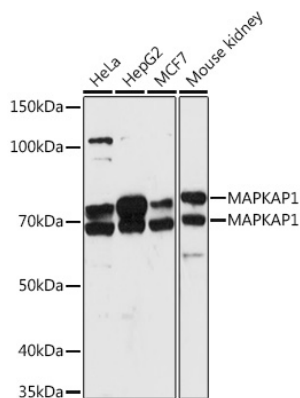
Affinity purification

### Storage

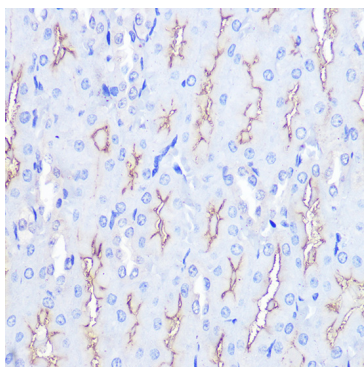
Store at -20°C. Avoid freeze / thaw cycles.

Buffer: PBS with 0.01% thimerosal, 50% glycerol, pH7.3.

## Validation Data



Western blot analysis of various lysates using MAPKAP1 Rabbit pAb (A6648) at 1:1000 dilution.  
Secondary antibody: HRP Goat Anti-Rabbit IgG (H+L) (AS014) at 1:10000 dilution.  
Lysates/proteins: 25µg per lane.  
Blocking buffer: 3% nonfat dry milk in TBST.  
Detection: ECL Basic Kit (RM00020).  
Exposure time: 90s.



Immunohistochemistry analysis of paraffin-embedded Rat kidney using MAPKAP1 Rabbit pAb (A6648) at dilution of 1:100 (40x lens). Perform microwave antigen retrieval with 10 mM PBS buffer pH 7.2 before commencing with IHC staining protocol.