

KDM4B/JMJD2B Rabbit mAb

Catalog No.: A6670

Recombinant

4 Publications

Basic Information

Observed MW

150kDa

Calculated MW

122kDa

Category

Primary antibody

Applications

WB,IF/ICC,IP,ELISA,ChIP

Cross-Reactivity

Human, Mouse, Rat

CloneNo number

ARC1416

Background

Enables histone H3-methyl-lysine-36 demethylase activity and histone H3-methyl-lysine-9 demethylase activity. Involved in histone H3-K36 demethylation and histone H3-K9 demethylation. Located in cytosol and nucleoplasm. Implicated in autosomal dominant non-syndromic intellectual disability; breast cancer; colorectal cancer; malignant peripheral nerve sheath tumor; and stomach cancer. Biomarker of several diseases, including alopecia areata; lung cancer; medulloblastoma; prostate cancer; and stomach cancer.

Recommended Dilutions

WB 1:500 - 1:2000**IF/ICC** 1:50 - 1:200**IP** 0.5µg-4µg antibody for 200µg-400µg extracts of whole cells**ELISA** Recommended starting concentration is 1 µg/mL. Please optimize the concentration based on your specific assay requirements.**ChIP** 5µg antibody for 10µg-15µg of Chromatin

Contact

 | 400-999-6126 | cn.market@abclonal.com.cn

Immunogen Information

Gene ID

23030

Swiss Prot

O94953

Immunogen

A synthetic peptide corresponding to a sequence within amino acids 50-150 of human KDM4B/JMJD2B (O94953).

Synonyms

MRD65; JMJD2B; TDRD14B; KDM4B/JMJD2B

Product Information

Source

Rabbit

Isotype

IgG

Purification

Affinity purification

Storage

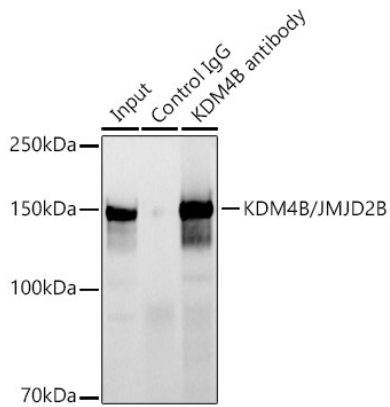
Store at -20°C. Avoid freeze / thaw cycles.

Buffer: PBS with 0.02% sodium azide,0.05% BSA,50% glycerol,pH7.3.

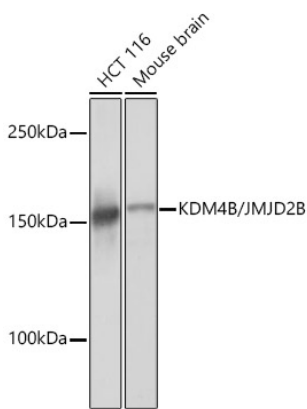


| www.abclonal.com.cn

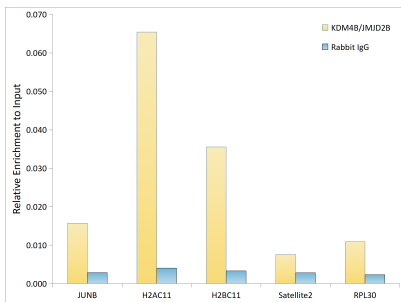
Validation Data



Immunoprecipitation analysis of 300 µg extracts of HCT116 cells using 3 µg KDM4B/JMJD2B antibody (A6670). Western blot was performed from the immunoprecipitate using KDM4B/JMJD2B antibody (A6670) at a dilution of 1:1000.

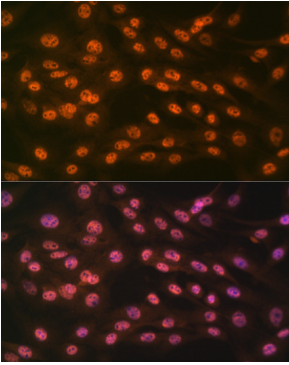


Western blot analysis of various lysates using KDM4B/JMJD2B Rabbit mAb (A6670) at 1:1000 dilution. Secondary antibody: HRP-conjugated Goat anti-Rabbit IgG (H+L) (AS014) at 1:10000 dilution. Lysates/proteins: 25µg per lane. Blocking buffer: 3% nonfat dry milk in TBST. Detection: ECL Basic Kit (RM00020). Exposure time: 1s.

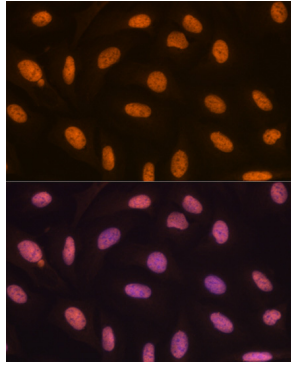


Chromatin immunoprecipitation analysis of extracts of 5637 cells, using KDM4B/JMJD2B antibody (A6670) and rabbit IgG. The amount of immunoprecipitated DNA was checked by quantitative PCR. Histogram was constructed by the ratios of the immunoprecipitated DNA to the input.

Validation Data



Immunofluorescence analysis of C6 cells using KDM4B/JMJD2B Rabbit mAb (A6670) at dilution of 1:100 (40x lens). Secondary antibody: Cy3-conjugated Goat anti-Rabbit IgG (H+L) (AS007) at 1:500 dilution. Blue: DAPI for nuclear staining.



Immunofluorescence analysis of U-2 OS cells using KDM4B/JMJD2B Rabbit mAb (A6670) at dilution of 1:100 (40x lens). Secondary antibody: Cy3-conjugated Goat anti-Rabbit IgG (H+L) (AS007) at 1:500 dilution. Blue: DAPI for nuclear staining.