

# [KO Validated] PDCD6 Rabbit pAb

Catalog No.: A6685 **KO Validated** **1 Publications**

## Basic Information

### Observed MW

16kDa

### Calculated MW

22kDa

### Category

Primary antibody

### Applications

ELISA, WB, IP

### Cross-Reactivity

Human, Mouse, Rat

## Background

This gene encodes a calcium-binding protein belonging to the penta-EF-hand protein family. Calcium binding is important for homodimerization and for conformational changes required for binding to other protein partners. This gene product participates in T cell receptor-, Fas-, and glucocorticoid-induced programmed cell death. In mice deficient for this gene product, however, apoptosis was not blocked suggesting this gene product is functionally redundant. Alternatively spliced transcript variants encoding multiple isoforms have been observed for this gene, and a pseudogene of this gene is also located on the short arm of chromosome 5.

## Recommended Dilutions

**WB** 1:500 - 1:1000

**IP** 0.5µg-4µg antibody for  
200µg-400µg extracts of  
whole cells

## Immunogen Information

### Gene ID

10016

### Swiss Prot

O75340

### Immunogen

Recombinant fusion protein containing a sequence corresponding to amino acids 1-191 of human PDCD6 (NP\_037364.1).

### Synonyms

ALG2; ALG-2; PEF1B; D6

## Contact

☎ | 400-999-6126

✉ | [cn.market@abclonal.com.cn](mailto:cn.market@abclonal.com.cn)

🌐 | [www.abclonal.com.cn](http://www.abclonal.com.cn)

## Product Information

### Source

Rabbit

### Isotype

IgG

### Purification

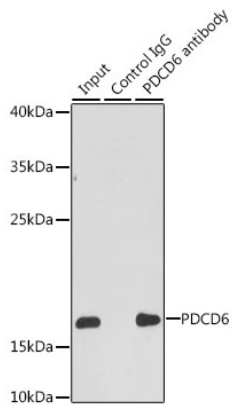
Affinity purification

### Storage

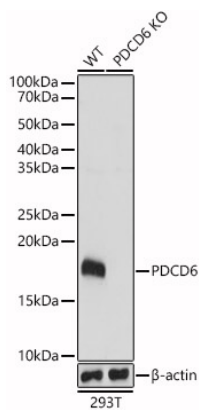
Store at -20°C. Avoid freeze / thaw cycles.

Buffer: PBS with 0.02% sodium azide, 50% glycerol, pH7.3.

## Validation Data



Immunoprecipitation analysis of 200  $\mu$ g extracts of HepG2 cells, using 3  $\mu$ g PDCD6 antibody (A6685). Western blot was performed from the immunoprecipitate using PDCD6 antibody (A6685) at a dilution of 1:1000.



Western blot analysis of lysates from wild type (WT) and PDCD6 knockout (KO) 293T (KO Validated) cells, using [KO Validated] PDCD6 Rabbit pAb (A6685) at 1:1000 dilution. Secondary antibody: HRP Goat Anti-Rabbit IgG (H+L) (AS014) at 1:10000 dilution. Lysates/proteins: 25  $\mu$ g per lane. Blocking buffer: 3% nonfat dry milk in TBST. Detection: ECL Basic Kit (RM00020). Exposure time: 1s.