

Phospholipid Scramblase 1 (PLSCR1) Rabbit pAb

Catalog No.: A6691

Basic Information

Observed MW

35kDa

Calculated MW

35kDa

Category

Primary antibody

Applications

ELISA, WB

Cross-Reactivity

Human

Background

This gene encodes a phospholipid scramblase family member. The encoded protein is involved in disruption of the asymmetrical distribution of phospholipids between the inner and outer leaflets of the plasma membrane, resulting in externalization of phosphatidylserine. This cell membrane disruption plays an important role in the blood coagulation cascade as well as macrophage clearing of apoptotic cells. The encoded protein has additionally been implicated in gene regulation and interferon-induced antiviral responses.

Recommended Dilutions

WB 1:500 - 1:2000

Immunogen Information

Gene ID

5359

Swiss Prot

O15162

Immunogen

Recombinant fusion protein containing a sequence corresponding to amino acids 1-318 of human Phospholipid Scramblase 1 (Phospholipid Scramblase 1 (PLSCR1)) (NP_066928.1).

Synonyms

MMTRA1B; Phospholipid Scramblase 1 (PLSCR1)

Contact

 | 400-999-6126

 | cn.market@abclonal.com.cn

 | www.abclonal.com.cn

Product Information

Source

Rabbit

Isotype

IgG

Purification

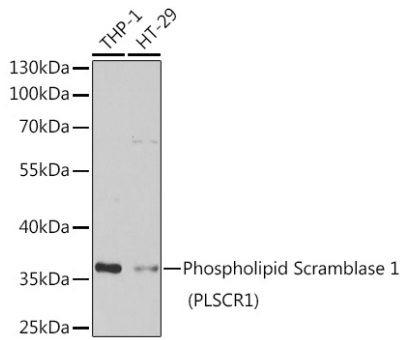
Affinity purification

Storage

Store at -20°C. Avoid freeze / thaw cycles.

Buffer: PBS with 0.02% sodium azide, 50% glycerol, pH 7.3.

Validation Data



Western blot analysis of extracts of various cell lines, using Phospholipid Scramblase 1 (Phospholipid Scramblase 1 (PLSCR1)) antibody (A6691) at 1:1000 dilution.
Secondary antibody: HRP Goat Anti-Rabbit IgG (H+L) (AS014) at 1:10000 dilution.
Lysates/proteins: 25µg per lane.
Blocking buffer: 3% nonfat dry milk in TBST.
Detection: ECL Basic Kit (RM00020).
Exposure time: 1s.