

# PP2A alpha/beta Rabbit pAb

Catalog No.: A6702 **5 Publications**

## Basic Information

### Observed MW

36kDa

### Calculated MW

36kDa

### Category

Primary antibody

### Applications

WB,IHC-P,IF/ICC,IP,ELISA

### Cross-Reactivity

Human, Mouse, Rat

## Background

This gene encodes the phosphatase 2A catalytic subunit. Protein phosphatase 2A is one of the four major Ser/Thr phosphatases, and it is implicated in the negative control of cell growth and division. It consists of a common heteromeric core enzyme, which is composed of a catalytic subunit and a constant regulatory subunit, that associates with a variety of regulatory subunits. This gene encodes an alpha isoform of the catalytic subunit.

## Recommended Dilutions

<b>WB</b>	1:1000 - 1:5000
<b>IHC-P</b>	1:50 - 1:200
<b>IF/ICC</b>	1:50 - 1:200
<b>IP</b>	0.5µg-4µg antibody for 200µg-500µg extracts of whole cells
<b>ELISA</b>	Recommended starting concentration is 1 µg/mL. Please optimize the concentration based on your specific assay requirements.

## Contact

☎ | 400-999-6126

✉ | [cn.market@abclonal.com.cn](mailto:cn.market@abclonal.com.cn)

🌐 | [www.abclonal.com.cn](http://www.abclonal.com.cn)

## Immunogen Information

### Gene ID

5515

### Swiss Prot

P67775

### Immunogen

Recombinant fusion protein containing a sequence corresponding to amino acids 1-309 of human PP2A Catalytic α (NP\_002706.1).

### Synonyms

RP-C; PP2Ac; PP2CA; NEDLBA; PP2Calpha; PP2A Catalytic α

## Product Information

### Source

Rabbit

### Isotype

IgG

### Purification

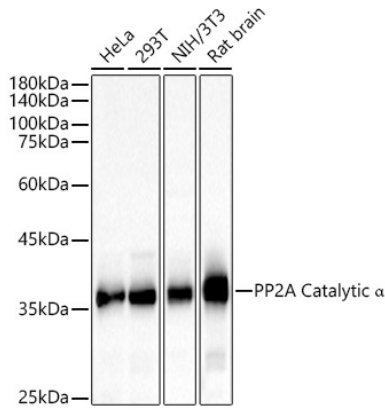
Affinity purification

### Storage

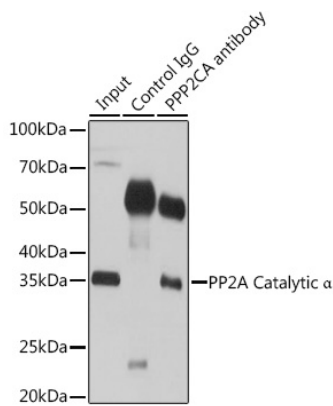
Store at -20°C. Avoid freeze / thaw cycles.

Buffer: PBS with 0.02% sodium azide,50% glycerol,pH7.3.

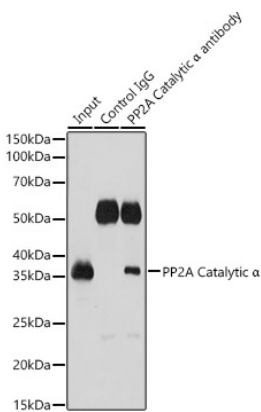
## Validation Data



Western blot analysis of various lysates, using PP2A Catalytic  $\alpha$  Rabbit pAb (A6702) at 1:2000 dilution. Secondary antibody: HRP-conjugated Goat anti-Rabbit IgG (H+L) (AS014) at 1:10000 dilution. Lysates/proteins: 25 $\mu$ g per lane. Blocking buffer: 3% nonfat dry milk in TBST. Detection: ECL Basic Kit (RM00020). Exposure time: 10s.



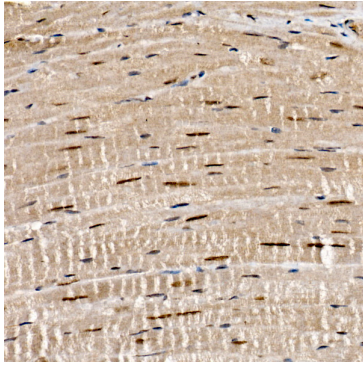
Immunoprecipitation analysis of 200  $\mu$ g extracts of 293T cells using 3  $\mu$ g PP2A Catalytic  $\alpha$  antibody (A6702). Western blot was performed from the immunoprecipitate using PP2A Catalytic  $\alpha$  antibody (A6702) at a dilution of 1:1000.



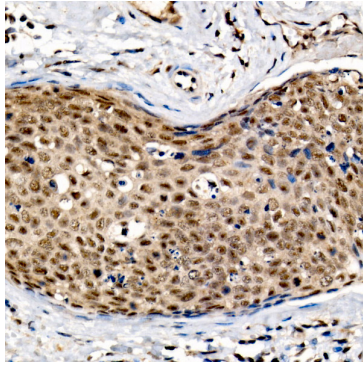
Immunoprecipitation analysis of 500  $\mu$ g extracts of Rat brain cells using 3  $\mu$ g PP2A Catalytic  $\alpha$  antibody (A6702). Western blot was performed from the immunoprecipitate using PP2A Catalytic  $\alpha$  antibody (A6702) at a dilution of 1:1000.

## Validation Data

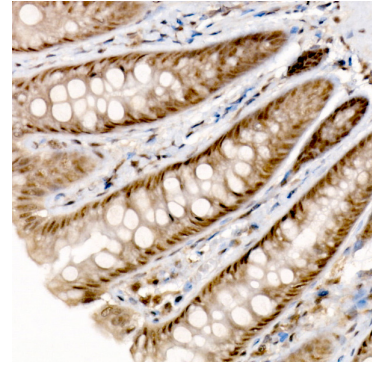
---



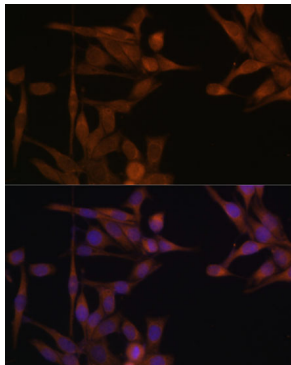
Immunohistochemistry analysis of paraffin-embedded Mouse heart tissue using PP2A Catalytic  $\alpha$  Rabbit pAb (A6702) at a dilution of 1:100 (40x lens). High pressure antigen retrieval was performed with 0.01 M citrate buffer (pH 6.0) prior to IHC staining.



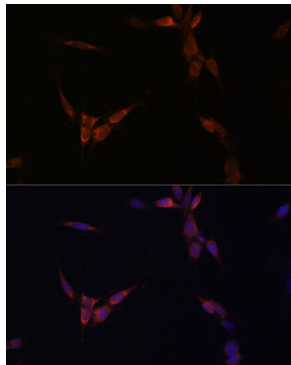
Immunohistochemistry analysis of paraffin-embedded Human cervical cancer tissue using PP2A Catalytic  $\alpha$  Rabbit pAb (A6702) at a dilution of 1:100 (40x lens). High pressure antigen retrieval was performed with 0.01 M citrate buffer (pH 6.0) prior to IHC staining.



Immunohistochemistry analysis of paraffin-embedded Rat colon tissue using PP2A Catalytic  $\alpha$  Rabbit pAb (A6702) at a dilution of 1:100 (40x lens). High pressure antigen retrieval was performed with 0.01 M citrate buffer (pH 6.0) prior to IHC staining.



Immunofluorescence analysis of HeLa cells using PP2A Catalytic  $\alpha$  Rabbit pAb (A6702) at dilution of 1:100. Secondary antibody: Cy3-conjugated Goat anti-Rabbit IgG (H+L) (AS007) at 1:500 dilution. Blue: DAPI for nuclear staining.



Immunofluorescence analysis of NIH/3T3 cells using PP2A Catalytic  $\alpha$  Rabbit pAb (A6702) at dilution of 1:100. Secondary antibody: Cy3-conjugated Goat anti-Rabbit IgG (H+L) (AS007) at 1:500 dilution. Blue: DAPI for nuclear staining.