

# RPA3 Rabbit pAb

Catalog No.: A6721 **1 Publications**

## Basic Information

### Observed MW

16kDa

### Calculated MW

14kDa

### Category

Primary antibody

### Applications

ELISA, WB, IF/ICC

### Cross-Reactivity

Human, Mouse, Rat

## Background

Enables damaged DNA binding activity and single-stranded DNA binding activity. Involved in DNA repair and DNA replication. Part of DNA replication factor A complex.

## Recommended Dilutions

<b>WB</b>	1:500 - 1:2000
<b>IF/ICC</b>	1:50 - 1:100

## Immunogen Information

### Gene ID

6119

### Swiss Prot

P35244

### Immunogen

Recombinant fusion protein containing a sequence corresponding to amino acids 6-121 of human RPA3 (NP\_002938.1).

### Synonyms

REPA3; RP-A p14; RPA3

## Contact

 | 400-999-6126

 | [cn.market@abclonal.com.cn](mailto:cn.market@abclonal.com.cn)

 | [www.abclonal.com.cn](http://www.abclonal.com.cn)

## Product Information

### Source

Rabbit

### Isotype

IgG

### Purification

Affinity purification

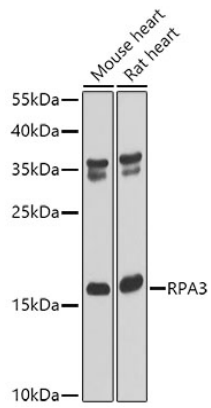
### Storage

Store at -20°C. Avoid freeze / thaw cycles.

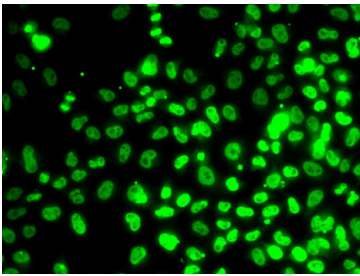
Buffer: PBS with 0.02% sodium azide, 50% glycerol, pH 7.3.

## Validation Data

---



Western blot analysis of extracts of various cell lines, using RPA3 antibody (A6721) at 1:1000 dilution.  
Secondary antibody: HRP Goat Anti-Rabbit IgG (H+L) (AS014) at 1:10000 dilution.  
Lysates/proteins: 25µg per lane.  
Blocking buffer: 3% nonfat dry milk in TBST.  
Detection: ECL Basic Kit (RM00020).  
Exposure time: 60s.



Immunofluorescence analysis of MCF7 cells using RPA3 antibody (A6721).