

# RPS27 Rabbit pAb

**Catalog No.: A6729**

## Basic Information

### Observed MW

10kDa

### Calculated MW

9kDa

### Category

Primary antibody

### Applications

ELISA, WB

### Cross-Reactivity

Human, Rat

## Background

Ribosomes, the organelles that catalyze protein synthesis, consist of a small 40S subunit and a large 60S subunit. Together these subunits are composed of four RNA species and approximately 80 structurally distinct proteins. This gene encodes a member of the S27e family of ribosomal proteins and component of the 40S subunit. The encoded protein contains a C4-type zinc finger domain that can bind to zinc and may bind to nucleic acid. Mutations in this gene have been identified in numerous melanoma patients and in at least one patient with Diamond-Blackfan anemia (DBA). Elevated expression of this gene has been observed in various human cancers. As is typical for genes encoding ribosomal proteins, there are multiple processed pseudogenes of this gene dispersed through the genome.

## Recommended Dilutions

**WB** 1:500 - 1:2000

## Immunogen Information

### Gene ID

6232

### Swiss Prot

P42677

### Immunogen

Recombinant fusion protein containing a sequence corresponding to amino acids 1-84 of human RPS27 (NP\_001021.1).

### Synonyms

S27; MPS1; eS27; DBA17; MPS-1; RPS27

## Contact

☎ | 400-999-6126

✉ | [cn.market@abclonal.com.cn](mailto:cn.market@abclonal.com.cn)

🌐 | [www.abclonal.com.cn](http://www.abclonal.com.cn)

## Product Information

### Source

Rabbit

### Isotype

IgG

### Purification

Affinity purification

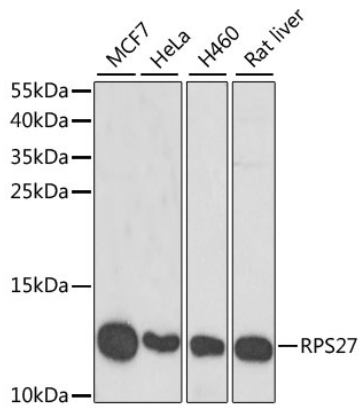
### Storage

Store at -20°C. Avoid freeze / thaw cycles.

Buffer: PBS with 0.02% sodium azide, 50% glycerol, pH7.3.

## Validation Data

---



Western blot analysis of extracts of various cell lines, using RPS27 antibody (A6729) at 1:1000 dilution.  
Secondary antibody: HRP Goat Anti-Rabbit IgG (H+L) (AS014) at 1:10000 dilution.  
Lysates/proteins: 25 $\mu$ g per lane.  
Blocking buffer: 3% nonfat dry milk in TBST.  
Detection: ECL Basic Kit (RM00020).  
Exposure time: 90s.