

# SLC34A1 Rabbit pAb

Catalog No.: A6742 **3 Publications**

## Basic Information

### Observed MW

75-80kDa

### Calculated MW

69kDa

### Category

Primary antibody

### Applications

ELISA, WB

### Cross-Reactivity

Human, Mouse, Rat

## Background

Enables sodium:phosphate symporter activity. Involved in several processes, including phosphate ion homeostasis; phosphate ion transport; and response to lead ion. Located in several cellular components, including apical plasma membrane; mitotic spindle; and nuclear speck. Implicated in several diseases, including Fanconi syndrome (multiple); chronic kidney disease; hereditary hypophosphatemic rickets with hypercalciuria; hypophosphatemic nephrolithiasis/osteoporosis 1; and nephrolithiasis.

## Recommended Dilutions

WB 1:500 - 1:1000

## Immunogen Information

### Gene ID

6569

### Swiss Prot

Q06495

### Immunogen

Recombinant fusion protein containing a sequence corresponding to amino acids 562-639 of human SLC34A1 (NP\_003043.3).

### Synonyms

NPT2; FRTS2; SLC11; HCINF2; NAPI-3; NPTIIa; NPHLOP1; SLC17A2; SLC34A1

## Contact

 | 400-999-6126

 | [cn.market@abclonal.com.cn](mailto:cn.market@abclonal.com.cn)

 | [www.abclonal.com.cn](http://www.abclonal.com.cn)

## Product Information

### Source

Rabbit

### Isotype

IgG

### Purification

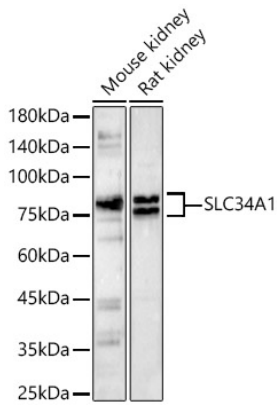
Affinity purification

### Storage

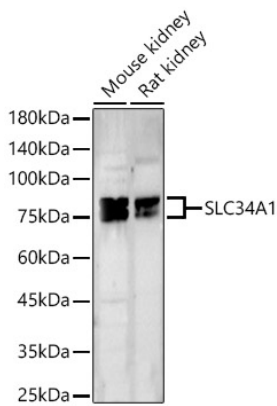
Store at -20°C. Avoid freeze / thaw cycles.

Buffer: PBS with 0.02% sodium azide, 50% glycerol, pH 7.3.

## Validation Data



Western blot analysis of various lysates, using SLC34A1 Rabbit pAb (A6742) at 1:800 dilution.  
Secondary antibody: HRP Goat Anti-Rabbit IgG (H+L) (AS014) at 1:10000 dilution.  
Lysates/proteins: 25µg per lane.  
Blocking buffer: 3% nonfat dry milk in TBST.  
Detection: ECL Basic Kit (RM00020).  
Exposure time: 90s.



Western blot analysis of various lysates, using SLC34A1 Rabbit pAb (A6742) at 1:800 dilution.  
Secondary antibody: HRP Goat Anti-Rabbit IgG (H+L) (AS014) at 1:10000 dilution.  
Lysates/proteins: 25µg per lane.  
Blocking buffer: 3% nonfat dry milk in TBST.  
Detection: ECL Basic Kit (RM00020).  
Exposure time: 180s.