

SMPD1 / ASM Rabbit pAb

Catalog No.: A6743 **3 Publications**

Basic Information

Observed MW

55kDa/70kDa/60kDa,70-75kDa

Calculated MW

70kDa

Category

Primary antibody

Applications

ELISA,WB,IF/ICC

Cross-Reactivity

Human, Mouse, Rat

Background

The protein encoded by this gene is a lysosomal acid sphingomyelinase that converts sphingomyelin to ceramide. The encoded protein also has phospholipase C activity. Defects in this gene are a cause of Niemann-Pick disease type A (NPA) and Niemann-Pick disease type B (NPB). Multiple transcript variants encoding different isoforms have been identified.

Recommended Dilutions

WB 1:100 - 1:500

IF/ICC 1:10 - 1:100

Immunogen Information

Gene ID

6609

Swiss Prot

P17405

Immunogen

Recombinant fusion protein containing a sequence corresponding to amino acids 70-340 of human SMPD1 / ASM (NP_000534.3).

Synonyms

ASM; NPD; ASMASE; SMPD1 / ASM

Contact

 | 400-999-6126

 | cn.market@abclonal.com.cn

 | www.abclonal.com.cn

Product Information

Source

Rabbit

Isotype

IgG

Purification

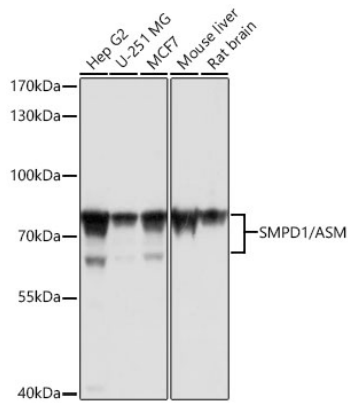
Affinity purification

Storage

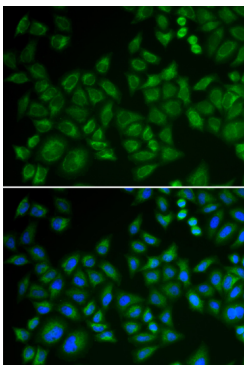
Store at -20°C. Avoid freeze / thaw cycles.

Buffer: PBS with 0.01% thimerosal,50% glycerol,pH7.3.

Validation Data



Western blot analysis of various lysates using SMPD1 / ASM Rabbit pAb (A6743) at 1:1000 dilution.
Secondary antibody:HRP Goat Anti-Rabbit IgG (H+L)(AS014) at 1:10000 dilution.
Lysates / proteins: 25 µg per lane.
Blocking buffer: 3 % nonfat dry milk in TBST.
Detection:ECL Basic Kit (RM00020).
Exposure time: 5s.



Immunofluorescence analysis of HeLa cells using SMPD1 / ASM Rabbit pAb (A6743).
Secondary antibody: Cy3 Goat Anti-Rabbit IgG (H+L) (AS007) at 1:500 dilution. Blue: DAPI for nuclear staining.