

SNAP91 Rabbit pAb

Catalog No.: A6746

Basic Information

Observed MW

180kDa

Calculated MW

93kDa

Category

Primary antibody

Applications

ELISA, WB

Cross-Reactivity

Mouse, Rat

Background

Predicted to enable several functions, including SNARE binding activity; clathrin binding activity; and phosphatidylinositol binding activity. Acts upstream of or within regulation of clathrin-dependent endocytosis. Predicted to be located in several cellular components, including postsynaptic density; presynaptic endosome; and presynaptic membrane. Predicted to be extrinsic component of endosome membrane. Predicted to be active in several cellular components, including Schaffer collateral - CA1 synapse; cytoplasmic vesicle; and parallel fiber to Purkinje cell synapse. Predicted to be extrinsic component of presynaptic endocytic zone membrane. Biomarker of Alzheimer's disease.

Recommended Dilutions

WB 1:500 - 1:2000

Immunogen Information

Gene ID

9892

Swiss Prot

O60641

Immunogen

Recombinant fusion protein containing a sequence corresponding to amino acids 321-600 of human SNAP91 (NP_001229723.1).

Synonyms

CALM; AP180; SNAP91

Contact

☎ | 400-999-6126

✉ | cn.market@abclonal.com.cn

🌐 | www.abclonal.com.cn

Product Information

Source

Rabbit

Isotype

IgG

Purification

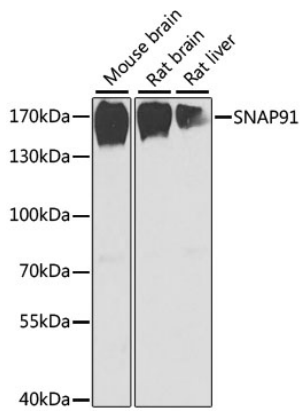
Affinity purification

Storage

Store at -20°C. Avoid freeze / thaw cycles.

Buffer: PBS with 0.02% sodium azide, 50% glycerol, pH 7.3.

Validation Data



Western blot analysis of extracts of various cell lines, using SNAP91 antibody (A6746) at 1:1000 dilution.
Secondary antibody: HRP Goat Anti-Rabbit IgG (H+L) (AS014) at 1:10000 dilution.
Lysates/proteins: 25 μ g per lane.
Blocking buffer: 3% nonfat dry milk in TBST.
Detection: ECL Basic Kit (RM00020).
Exposure time: 90s.