

# TDO2 Rabbit pAb

Catalog No.: A6766

1 Publications

## Basic Information

### Observed MW

48kDa

### Calculated MW

48kDa

### Category

Primary antibody

### Applications

ELISA, WB, IF/ICC

### Cross-Reactivity

Human, Mouse

## Background

This gene encodes a heme enzyme that plays a critical role in tryptophan metabolism by catalyzing the first and rate-limiting step of the kynurenine pathway. Increased activity of the encoded protein and subsequent kynurenine production may also play a role in cancer through the suppression of antitumor immune responses, and single nucleotide polymorphisms in this gene may be associated with autism.

## Recommended Dilutions

WB 1:1000 - 1:5000

IF/ICC 1:50 - 1:200

## Immunogen Information

### Gene ID

6999

### Swiss Prot

P48775

### Immunogen

A synthetic peptide corresponding to a sequence within amino acids 100-200 of human TDO2 (NP\_005642.1).

### Synonyms

TO; TDO; TPH2; TRPO; HYPTRP; TDO2

## Contact

☎ | 400-999-6126

✉ | [cn.market@abclonal.com.cn](mailto:cn.market@abclonal.com.cn)

🌐 | [www.abclonal.com.cn](http://www.abclonal.com.cn)

## Product Information

### Source

Rabbit

### Isotype

IgG

### Purification

Affinity purification

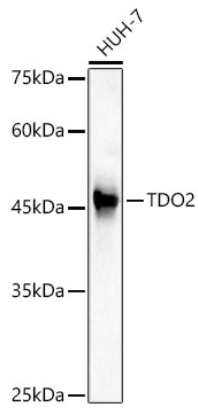
### Storage

Store at -20°C. Avoid freeze / thaw cycles.

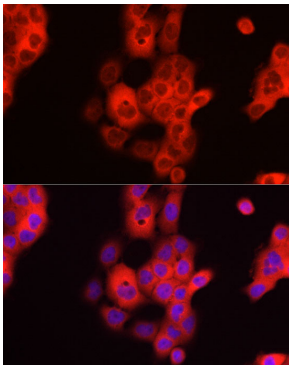
Buffer: PBS with 0.01% thimerosal, 50% glycerol, pH7.3.

## Validation Data

---



Western blot analysis of HUH-7, using TDO2 antibody (A6766) at 1:2000 dilution.  
Secondary antibody: HRP Goat Anti-Rabbit IgG (H+L) (AS014) at 1:10000 dilution.  
Lysates/proteins: 25µg per lane.  
Blocking buffer: 3% nonfat dry milk in TBST.  
Detection: ECL Basic Kit (RM00020).  
Exposure time: 90s.



Immunofluorescence analysis of A-431 cells using TDO2 Rabbit pAb (A6766) at dilution of 1:200 (40x lens). Blue: DAPI for nuclear staining.