

TEAD1 Rabbit pAb

Catalog No.: A6768

10 Publications

Basic Information

Observed MW

60kDa

Calculated MW

48kDa

Category

Primary antibody

Applications

ELISA, WB, IHC-P, IF/ICC, IP, ChIP

Cross-Reactivity

Human, Mouse, Rat

Background

This gene encodes a ubiquitous transcriptional enhancer factor that is a member of the TEA/ATTS domain family. This protein directs the transactivation of a wide variety of genes and, in placental cells, also acts as a transcriptional repressor. Mutations in this gene cause Sveinsson's chorioretinal atrophy. Additional transcript variants have been described but their full-length natures have not been experimentally verified.

Recommended Dilutions

WB	1:1000 - 1:5000
IHC-P	1:50 - 1:200
IF/ICC	1:50 - 1:200
IP	0.5µg-4µg antibody for 400µg-600µg extracts of whole cells
ChIP	5µg antibody for 10µg-15µg of Chromatin

Contact

☎	400-999-6126
✉	cn.market@abclonal.com.cn
🌐	www.abclonal.com.cn

Immunogen Information

Gene ID

7003

Swiss Prot

P28347

Immunogen

Recombinant fusion protein containing a sequence corresponding to amino acids 135-215 of human TEAD1 (NP_068780.2).

Synonyms

AA; REF1; TCF13; TEF-1; NTEF-1; TCF-13; TEAD-1; TEAD1

Product Information

Source

Rabbit

Isotype

IgG

Purification

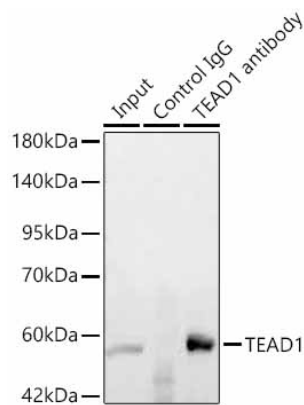
Affinity purification

Storage

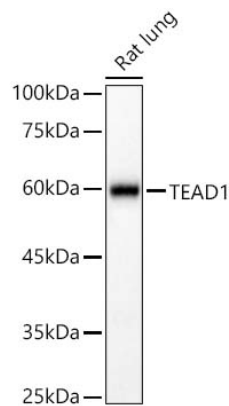
Store at -20°C. Avoid freeze / thaw cycles.

Buffer: PBS with 0.05% proclin300, 50% glycerol, pH7.3.

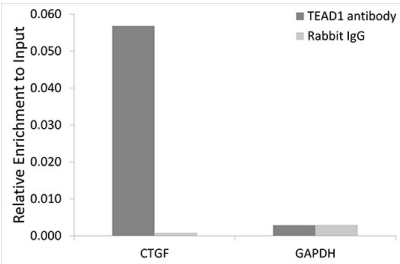
Validation Data



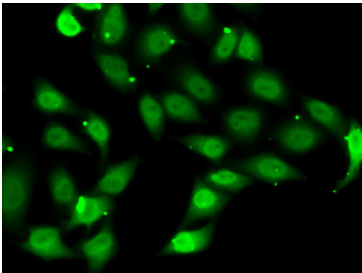
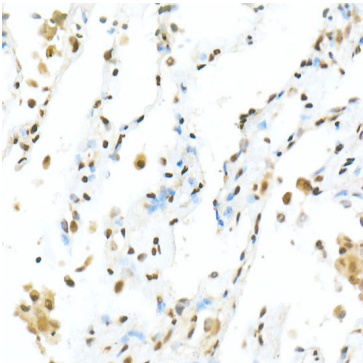
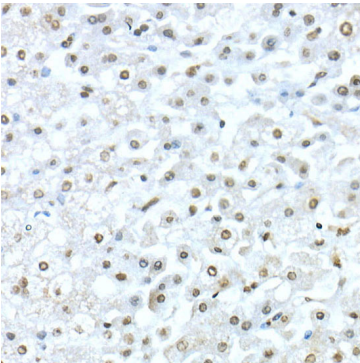
Immunoprecipitation of TEAD1 in 600 µg extracts from mouse heart using 3 µg TEAD1 Rabbit pAb (A6768). Western blot analysis was performed using TEAD1 Rabbit pAb (A6768) at 1:200 dilution.



Western blot analysis of lysates from Rat lung using TEAD1 Rabbit pAb(A6768) at 1:2000 dilution. Secondary antibody:HRP Goat Anti-Rabbit IgG (H+L)(AS014) at 1:10000 dilution. Lysates/proteins: 25 µg per lane. Blocking buffer: 3% nonfat dry milk in TBST. Detection:ECL Basic Kit (RM00020). Exposure time:90s.



Chromatin immunoprecipitation analysis of extracts of HeLa cells, using TEAD1 antibody (A6768) and rabbit IgG. The amount of immunoprecipitated DNA was checked by quantitative PCR. Histogram was constructed by the ratios of the immunoprecipitated DNA to the input.



Validation Data

Immunohistochemistry analysis of TEAD1 in paraffin-embedded human liver using TEAD1 Rabbit pAb (A6768) at dilution of 1:50 (40x lens). Perform high pressure antigen retrieval with 10 mM citrate buffer pH 6.0 before commencing with IHC staining protocol.

Immunohistochemistry analysis of TEAD1 in paraffin-embedded human lung using TEAD1 Rabbit pAb (A6768) at dilution of 1:50 (40x lens). Perform high pressure antigen retrieval with 10 mM citrate buffer pH 6.0 before commencing with IHC staining protocol.

Immunofluorescence analysis of MCF7 cells using TEAD1 Rabbit pAb (A6768).Secondary antibody: Cy3 Goat Anti-Rabbit IgG (H+L) (AS007) at 1:500 dilution.