

# TPPP3 Rabbit pAb

Catalog No.: A6775 **1 Publications**

## Basic Information

### Observed MW

19kDa

### Calculated MW

19kDa

### Category

Primary antibody

### Applications

ELISA, WB

### Cross-Reactivity

Human, Mouse, Rat

## Background

Enables tubulin binding activity. Involved in decidualization and microtubule bundle formation. Colocalizes with microtubule bundle and perinuclear region of cytoplasm.

## Recommended Dilutions

WB 1:500 - 1:1000

## Immunogen Information

### Gene ID

51673

### Swiss Prot

Q9BW30

### Immunogen

Recombinant fusion protein containing a sequence corresponding to amino acids 1-176 of human TPPP3 (NP\_057048.2).

### Synonyms

p20; CGI-38; TPPP/p20; p25gamma; TPPP3

## Contact

 | 400-999-6126

 | [cn.market@abclonal.com.cn](mailto:cn.market@abclonal.com.cn)

 | [www.abclonal.com.cn](http://www.abclonal.com.cn)

## Product Information

### Source

Rabbit

### Isotype

IgG

### Purification

Affinity purification

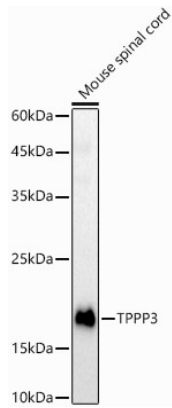
### Storage

Store at -20°C. Avoid freeze / thaw cycles.

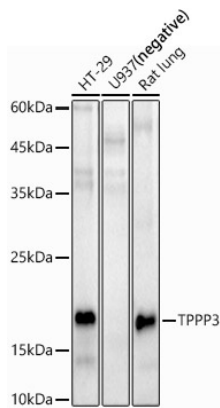
Buffer: PBS with 0.05% proclin300, 50% glycerol, pH7.3.

## Validation Data

---



Western blot analysis of extracts of Mouse spinal cord, using TPPP3 antibody (A6775) at 1:1000 dilution.  
Secondary antibody: HRP Goat Anti-Rabbit IgG (H+L) (AS014) at 1:10000 dilution.  
Lysates/proteins: 25µg per lane.  
Blocking buffer: 3% nonfat dry milk in TBST.  
Detection: ECL Basic Kit (RM00020).  
Exposure time: 90s.



Western blot analysis of extracts of various cell lines, using TPPP3 antibody (A6775) at 1:1000 dilution.  
Secondary antibody: HRP Goat Anti-Rabbit IgG (H+L) (AS014) at 1:10000 dilution.  
Lysates/proteins: 25µg per lane.  
Blocking buffer: 3% nonfat dry milk in TBST.  
Detection: ECL Basic Kit (RM00020).  
Exposure time: 180s.