

TSHB Rabbit pAb

Catalog No.: A6780

Basic Information

Observed MW

Refer to Figures

Calculated MW

16kDa

Category

Primary antibody

Applications

ELISA, IHC-P, IF/ICC

Cross-Reactivity

Human, Mouse

Background

The four human glycoprotein hormones chorionic gonadotropin (CG), luteinizing hormone (LH), follicle stimulating hormone (FSH), and thyroid stimulating hormone (TSH) are dimers consisting of alpha and beta subunits that are associated noncovalently. The alpha subunits of these hormones are identical, however, their beta chains are unique and confer biological specificity. Thyroid stimulating hormone functions in the control of thyroid structure and metabolism. The protein encoded by this gene is the beta subunit of thyroid stimulating hormone. Mutations in this gene are associated with congenital central and secondary hypothyroidism and Hashimoto's thyroiditis. Alternative splicing of this gene results in multiple transcript variants.

Recommended Dilutions

WB	1:500 - 1:2000
IHC-P	1:50 - 1:100
IF/ICC	1:50 - 1:100

Immunogen Information

Gene ID

7252

Swiss Prot

P01222

Immunogen

Recombinant fusion protein containing a sequence corresponding to amino acids 21-138 of human TSHB (NP_000540.2).

Synonyms

TSH-B; TSH-BETA; TSHB

Contact

☎ | 400-999-6126

✉ | cn.market@abclonal.com.cn

🌐 | www.abclonal.com.cn

Product Information

Source

Rabbit

Isotype

IgG

Purification

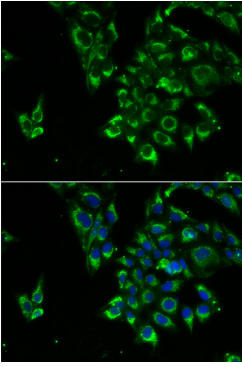
Affinity purification

Storage

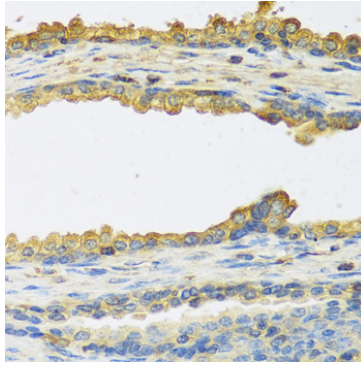
Store at -20°C. Avoid freeze / thaw cycles.

Buffer: PBS with 0.02% sodium azide, 50% glycerol, pH7.3.

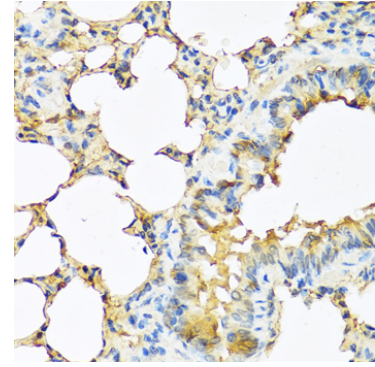
Validation Data



Immunofluorescence analysis of U2OS cells using TSHB Rabbit pAb (A6780). Secondary antibody: Cy3-conjugated Goat anti-Rabbit IgG (H+L) (AS007) at 1:500 dilution. Blue: DAPI for nuclear staining.



Immunohistochemistry analysis of paraffin-embedded Human prostate using TSHB Rabbit pAb (A6780) at dilution of 1:100 (40x lens). Microwave antigen retrieval performed with 0.01M PBS Buffer (pH 7.2) prior to IHC staining.



Immunohistochemistry analysis of paraffin-embedded Mouse lung using TSHB Rabbit pAb (A6780) at dilution of 1:100 (40x lens). Microwave antigen retrieval performed with 0.01M PBS Buffer (pH 7.2) prior to IHC staining.