

HE4/WFDC2 Rabbit pAb

Catalog No.: A6788

Basic Information

Observed MW

20kDa

Calculated MW

13kDa

Category

Primary antibody

Applications

ELISA, WB, IF/ICC

Cross-Reactivity

Human, Mouse, Rat

Background

This gene encodes a protein that is a member of the WFDC domain family. The WFDC domain, or WAP Signature motif, contains eight cysteines forming four disulfide bonds at the core of the protein, and functions as a protease inhibitor in many family members. This gene is expressed in pulmonary epithelial cells, and was also found to be expressed in some ovarian cancers. The encoded protein is a small secretory protein, which may be involved in sperm maturation.

Recommended Dilutions

WB	1:500 - 1:1000
IF/ICC	1:50 - 1:200

Immunogen Information

Gene ID

10406

Swiss Prot

Q14508

Immunogen

Recombinant fusion protein containing a sequence corresponding to amino acids 31-124 of human HE4/WFDC2 (NP_006094.3).

Synonyms

HE4; WAP5; EDDM4; dj461P17.6; HE4/WFDC2

Contact

	400-999-6126
	cn.market@abclonal.com.cn
	www.abclonal.com.cn

Product Information

Source

Rabbit

Isotype

IgG

Purification

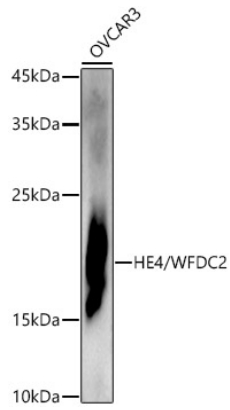
Affinity purification

Storage

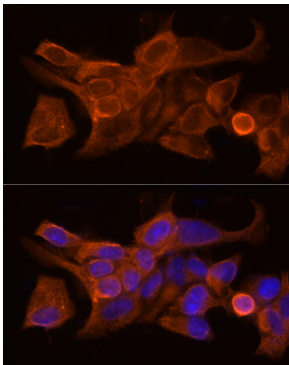
Store at -20°C. Avoid freeze / thaw cycles.

Buffer: PBS with 0.05% proclin300, 50% glycerol, pH7.3.

Validation Data



Western blot analysis of extracts of OVCAR3 cells, using HE4/WFDC2 antibody (A6788) at 1:1000 dilution.
Secondary antibody: HRP Goat Anti-Rabbit IgG (H+L) (AS014) at 1:10000 dilution.
Lysates/proteins: 25µg per lane.
Blocking buffer: 3% nonfat dry milk in TBST.
Detection: ECL Enhanced Kit (RM00021).
Exposure time: 180s.



Immunofluorescence analysis of MCF7 cells using HE4/WFDC2 Rabbit pAb (A6788) at dilution of 1:50 (40x lens). Blue: DAPI for nuclear staining.