

Exportin 5 (XPO5) Rabbit pAb

Catalog No.: A6790

Basic Information

Observed MW

136kDa

Calculated MW

136kDa

Category

Primary antibody

Applications

WB, IF/ICC, IP, ELISA

Cross-Reactivity

Human, Mouse, Rat

Background

This gene encodes a member of the karyopherin family that is required for the transport of small RNAs and double-stranded RNA-binding proteins from the nucleus to the cytoplasm. The encoded protein translocates cargo through the nuclear pore complex in a RanGTP-dependent process.

Recommended Dilutions

WB 1:2000 - 1:10000

IF/ICC 1:100 - 1:500

IP 0.5µg-4µg antibody for
200µg-400µg extracts of
whole cells

ELISA Recommended starting
concentration is 1 µg/mL.
Please optimize the
concentration based on
your specific assay
requirements.

Immunogen Information

Gene ID

57510

Swiss Prot

Q9HAV4

Immunogen

Recombinant protein (or fragment). This information is considered to be commercially sensitive.

Synonyms

exp5; Exportin 5 (XPO5)

Contact

☎ | 400-999-6126

✉ | cn.market@abclonal.com.cn

🌐 | www.abclonal.com.cn

Product Information

Source

Rabbit

Isotype

IgG

Purification

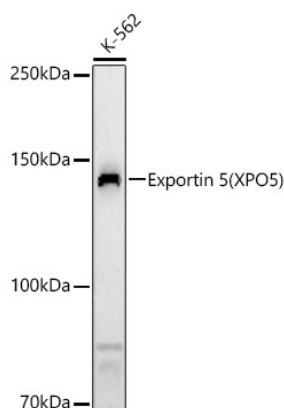
Affinity purification

Storage

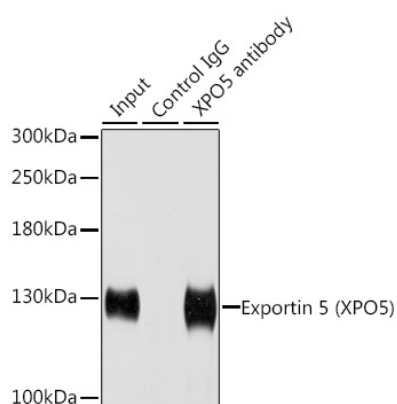
Store at -20°C. Avoid freeze / thaw cycles.

Buffer: PBS containing 50% glycerol, preserved with proclin300 or sodium azide (as specified on the Certificate of Analysis), pH 7.3.

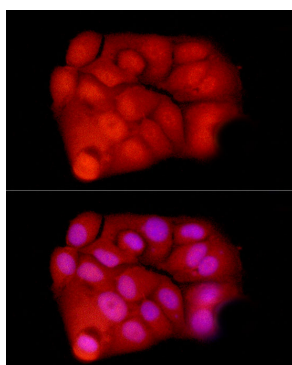
Validation Data



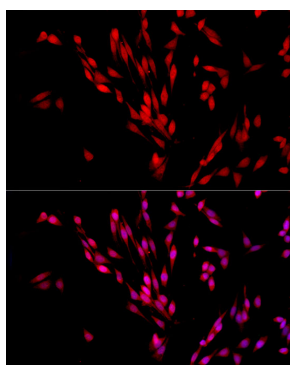
Western blot analysis of various lysates, using Exportin 5 (XPO5) Rabbit pAb (A6790) at 1:10000 dilution. Secondary antibody: HRP-conjugated Goat anti-Rabbit IgG (H+L) (AS014) at 1:10000 dilution. Lysates/proteins: 25µg per lane. Blocking buffer: 3% nonfat dry milk in TBST. Detection: ECL Basic Kit (RM00020). Exposure time: 90s.



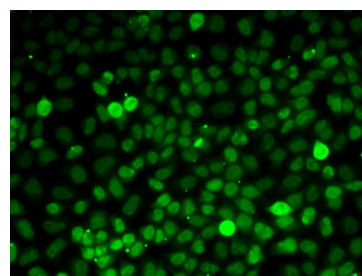
Immunoprecipitation analysis of 200 µg extracts of HeLa cells using 1 µg Exportin 5 (Exportin 5 (XPO5)) antibody (A6790). Western blot was performed from the immunoprecipitate using Exportin 5 (Exportin 5 (XPO5)) antibody (A6790) at a dilution of 1:1000.



Immunofluorescence analysis of MCF7 cells using Exportin 5 (XPO5) Rabbit pAb (A6790) at dilution of 1:500 (40x lens). Secondary antibody: Cy3-conjugated Goat anti-Rabbit IgG (H+L) (AS007) at 1:500 dilution. Blue: DAPI for nuclear staining.



Immunofluorescence analysis of PC-12 cells using Exportin 5 (XPO5) Rabbit pAb (A6790) at dilution of 1:500 (40x lens). Secondary antibody: Cy3-conjugated Goat anti-Rabbit IgG (H+L) (AS007) at 1:500 dilution. Blue: DAPI for nuclear staining.



Immunofluorescence analysis of MCF7 cells using Exportin 5 (XPO5) Rabbit pAb (A6790). Secondary antibody: Cy3-conjugated Goat anti-Rabbit IgG (H+L) (AS007) at 1:500 dilution.