

# ZDHHC17 Rabbit pAb

Catalog No.: A6793

1 Publications

## Basic Information

### Observed MW

73kDa

### Calculated MW

73kDa

### Category

Primary antibody

### Applications

ELISA, WB

### Cross-Reactivity

Human, Mouse, Rat

## Background

Enables identical protein binding activity and protein-cysteine S-palmitoyltransferase activity. Involved in lipoprotein transport and protein palmitoylation. Located in Golgi membrane; Golgi-associated vesicle membrane; and aggresome.

## Recommended Dilutions

WB 1:500 - 1:1000

## Immunogen Information

### Gene ID

23390

### Swiss Prot

Q8IUH5

### Immunogen

Recombinant fusion protein containing a sequence corresponding to amino acids 170-310 of human ZDHHC17 (NP\_056151.2).

### Synonyms

HIP3; HYPH; HIP14; DHHC17; DHHC-17; HSPC294; ZDHHC17

## Contact

☎ | 400-999-6126

✉ | [cn.market@abclonal.com.cn](mailto:cn.market@abclonal.com.cn)

🌐 | [www.abclonal.com.cn](http://www.abclonal.com.cn)

## Product Information

### Source

Rabbit

### Isotype

IgG

### Purification

Affinity purification

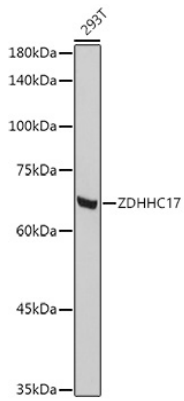
### Storage

Store at -20°C. Avoid freeze / thaw cycles.

Buffer: PBS with 0.02% sodium azide, 50% glycerol, pH 7.3.

## Validation Data

---



Western blot analysis of extracts of 293T cells, using ZDHHC17 antibody (A6793) at 1:1000 dilution.  
Secondary antibody: HRP Goat Anti-Rabbit IgG (H+L) (AS014) at 1:10000 dilution.  
Lysates/proteins: 25µg per lane.  
Blocking buffer: 3% nonfat dry milk in TBST.  
Detection: ECL Basic Kit (RM00020).  
Exposure time: 10s.