

Bcl9 Rabbit pAb

Catalog No.: A6795

1 Publications

Basic Information

Observed MW

160kDa/170kDa

Calculated MW

149kDa

Category

Primary antibody

Applications

WB,IHC-P,ELISA

Cross-Reactivity

Human, Mouse, Rat

Background

Enables beta-catenin binding activity. Acts upstream of or within several processes, including myotube differentiation involved in skeletal muscle regeneration; skeletal muscle cell differentiation; and somatic stem cell population maintenance. Located in cis-Golgi network and nucleus. Is expressed in several structures, including brain; eye; head surface ectoderm; metanephros; and thymus primordium. Orthologous to human BCL9 (BCL9 transcription coactivator).

Recommended Dilutions

WB 1:500 - 1:2000

IHC-P 1:50 - 1:200

ELISA Recommended starting concentration is 1 µg/mL. Please optimize the concentration based on your specific assay requirements.

Immunogen Information

Gene ID

77578

Swiss Prot

Q9D219

Immunogen

Recombinant protein of mouse Bcl9

Synonyms

Gm130; 2610202E01Rik; 8030475K17Rik; A330041G23Rik; Bcl9

Contact

☎ | 400-999-6126

✉ | cn.market@abclonal.com.cn

🌐 | www.abclonal.com.cn

Product Information

Source

Rabbit

Isotype

IgG

Purification

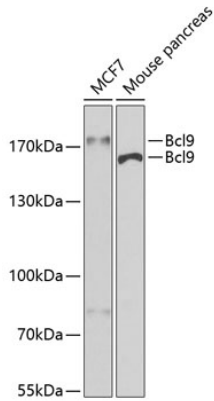
Affinity purification

Storage

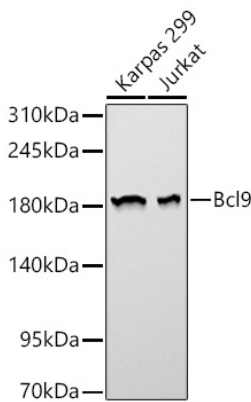
Store at -20°C. Avoid freeze / thaw cycles.

Buffer: PBS with 0.02% sodium azide,50% glycerol,pH7.3.

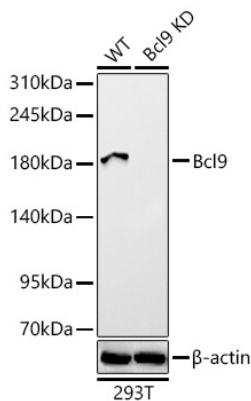
Validation Data



Western blot analysis of various lysates using Bcl9 Rabbit pAb (A6795) at 1:400 dilution.
Secondary antibody: HRP-conjugated Goat anti-Rabbit IgG (H+L) (AS014) at 1:10000 dilution.
Lysates/proteins: 25µg per lane.
Blocking buffer: 3% nonfat dry milk in TBST.
Detection: ECL Basic Kit (RM00020).
Exposure time: 30s.

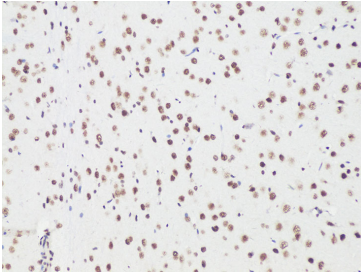


Western blot analysis of various lysates using [KD Validated] Bcl9 Rabbit pAb (A6795) at 1:1000 dilution.
Secondary antibody: HRP-conjugated Goat anti-Rabbit IgG (H+L) (AS014) at 1:10000 dilution.
Lysates / proteins: 25 µg per lane.
Blocking buffer: 3 % nonfat dry milk in TBST.
Detection: ECL Basic Kit (RM00020).
Exposure time: 60s.

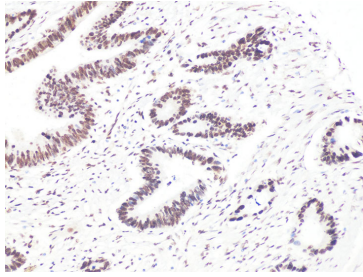


Western blot analysis of lysates from wild type (WT) and Bcl9 knockdown (KD) 293T cells using [KD Validated] Bcl9 Rabbit pAb (A6795) at 1:1000 dilution.
Secondary antibody: HRP-conjugated Goat anti-Rabbit IgG (H+L) (AS014) at 1:10000 dilution.
Lysates/proteins: 25 µg per lane.
Blocking buffer: 3% nonfat dry milk in TBST.
Detection: ECL Basic Kit (RM00020).
Exposure time: 60s.

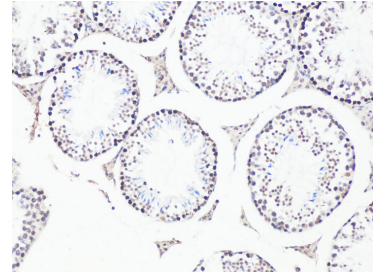
Validation Data



Immunohistochemistry analysis of paraffin-embedded Rat brain using Bcl9 Rabbit pAb (A6795) at dilution of 1:100 (20x lens). Microwave antigen retrieval performed with 0.01M PBS Buffer (pH 7.2) prior to IHC staining.



Immunohistochemistry analysis of paraffin-embedded Human colon carcinoma using Bcl9 Rabbit pAb (A6795) at dilution of 1:100 (20x lens). Microwave antigen retrieval performed with 0.01M PBS Buffer (pH 7.2) prior to IHC staining.



Immunohistochemistry analysis of paraffin-embedded Mouse testis using Bcl9 Rabbit pAb (A6795) at dilution of 1:100 (20x lens). Microwave antigen retrieval performed with 0.01M PBS Buffer (pH 7.2) prior to IHC staining.