

EXO1 Rabbit pAb

Catalog No.: A6810 **2 Publications**

Basic Information

Observed MW

110kDa

Calculated MW

94kDa

Category

Primary antibody

Applications

WB

Cross-Reactivity

Human

Background

This gene encodes a protein with 5' to 3' exonuclease activity as well as an RNase H activity. It is similar to the *Saccharomyces cerevisiae* protein Exo1 which interacts with Msh2 and which is involved in mismatch repair and recombination. Alternative splicing of this gene results in three transcript variants encoding two different isoforms.

Recommended Dilutions

WB 1:500 - 1:1000

Immunogen Information

Gene ID

9156

Swiss Prot

Q9UQ84

Immunogen

A synthetic peptide of human EXO1

Synonyms

HEX1; hExo1; EXO1

Contact

 | 400-999-6126

 | cn.market@abclonal.com.cn

 | www.abclonal.com.cn

Product Information

Source

Rabbit

Isotype

IgG

Purification

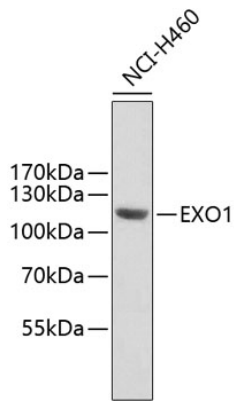
Affinity purification

Storage

Store at 4°C. Avoid freeze / thaw cycles.

Buffer: PBS with 0.02% sodium azide, pH7.3.

Validation Data



Western blot analysis of extracts of NCI-H460 cells, using EXO1 antibody (A6810).
Secondary antibody: HRP Goat Anti-Rabbit IgG (H+L) (AS014) at 1:10000 dilution.
Lysates/proteins: 25µg per lane.
Blocking buffer: 3% nonfat dry milk in TBST.