

α -Tubulin Rabbit mAb

Catalog No.: A6830 **Recombinant** **10 Publications**

Basic Information

Observed MW

50kDa

Calculated MW

50kDa

Category

Primary antibody

Applications

WB,IHC-P,IF/ICC,IP,ELISA

Cross-Reactivity

Human, Mouse, Rat

CloneNo number

ARC2486

Recommended Dilutions

WB 1:1000 - 1:6000

IHC-P 1:200 - 1:2000

IF/ICC 1:100 - 1:800

IP 0.5 μ g-4 μ g antibody for
200 μ g-400 μ g extracts of
whole cells

ELISA Recommended starting
concentration is 1 μ g/mL.
Please optimize the
concentration based on
your specific assay
requirements.

Contact

 | 400-999-6126

 | cn.market@abclonal.com.cn

 | www.abclonal.com.cn

Background

Microtubules of the eukaryotic cytoskeleton perform essential and diverse functions and are composed of a heterodimer of alpha and beta tubulin. The genes encoding these microtubule constituents are part of the tubulin superfamily, which is composed of six distinct families. Genes from the alpha, beta and gamma tubulin families are found in all eukaryotes. The alpha and beta tubulins represent the major components of microtubules, while gamma tubulin plays a critical role in the nucleation of microtubule assembly. There are multiple alpha and beta tubulin genes and they are highly conserved among and between species. This gene encodes an alpha tubulin that is a highly conserved homolog of a rat testis-specific alpha tubulin. Alternatively spliced transcript variants encoding different isoforms have been found for this gene.

Immunogen Information

Gene ID

7277

Swiss Prot

P68366

Immunogen

A synthetic peptide corresponding to a sequence within amino acids 349-448 of human α -Tubulin (P68366).

Synonyms

ALS22; TUBA1; H2-ALPHA; α -Tubulin

Product Information

Source

Rabbit

Isotype

IgG

Purification

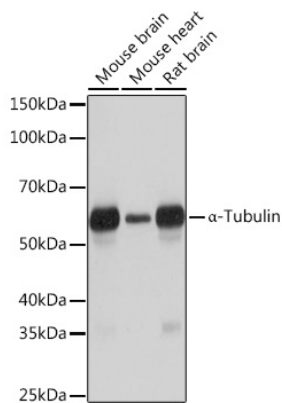
Affinity purification

Storage

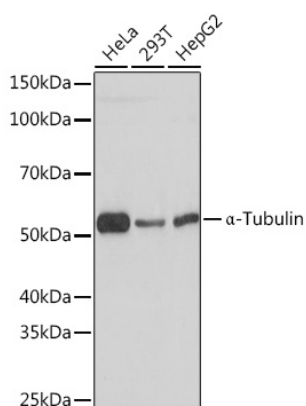
Store at -20°C. Avoid freeze / thaw cycles.

Buffer: PBS with 0.02% sodium azide,0.05% BSA,50% glycerol,pH7.3.

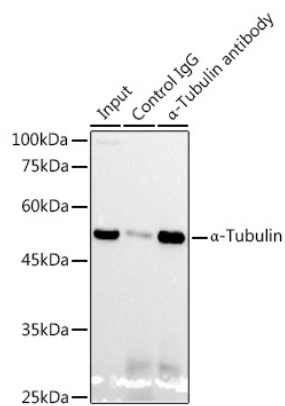
Validation Data



Western blot analysis of various lysates using α -Tubulin Rabbit mAb (A6830) at 1:1000 dilution. Secondary antibody: HRP-conjugated Goat anti-Rabbit IgG (H+L) (AS014) at 1:10000 dilution. Lysates/proteins: 25 μ g per lane. Blocking buffer: 3% nonfat dry milk in TBST. Detection: ECL Basic Kit (RM00020). Exposure time: 3s.

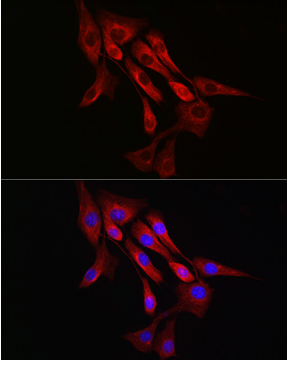


Western blot analysis of various lysates using α -Tubulin Rabbit mAb (A6830) at 1:1000 dilution. Secondary antibody: HRP-conjugated Goat anti-Rabbit IgG (H+L) (AS014) at 1:10000 dilution. Lysates/proteins: 25 μ g per lane. Blocking buffer: 3% nonfat dry milk in TBST. Detection: ECL Basic Kit (RM00020). Exposure time: 3s.

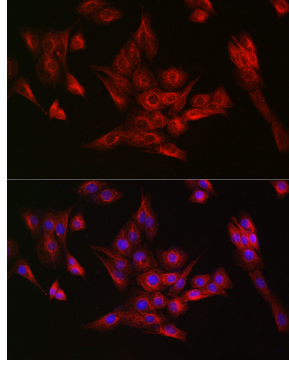


Immunoprecipitation analysis of 300 μ g extracts from HeLa cells using 3 μ g α -Tubulin Rabbit mAb (A6830). Western blot was performed from the immunoprecipitate using α -Tubulin Rabbit mAb (A6830) at a dilution of 1:1000.

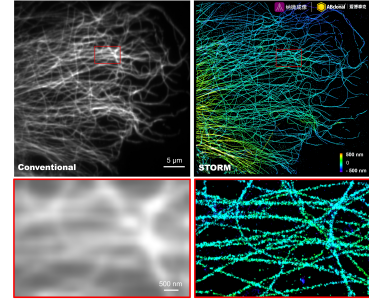
Validation Data



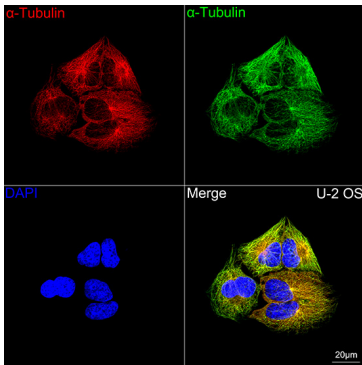
Immunofluorescence analysis of NIH/3T3 cells using α -Tubulin Rabbit mAb (A6830) at dilution of 1:100 (40x lens). Secondary antibody: Cy3-conjugated Goat anti-Rabbit IgG (H+L) (AS007) at 1:500 dilution. Blue: DAPI for nuclear staining.



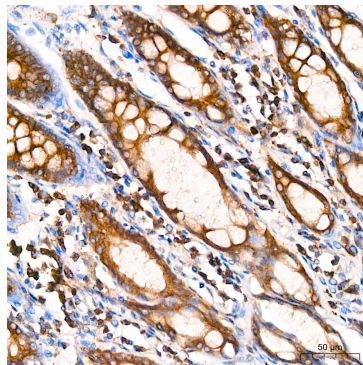
Immunofluorescence analysis of PC-12 cells using α -Tubulin Rabbit mAb (A6830) at dilution of 1:100 (40x lens). Secondary antibody: Cy3-conjugated Goat anti-Rabbit IgG (H+L) (AS007) at 1:500 dilution. Blue: DAPI for nuclear staining.



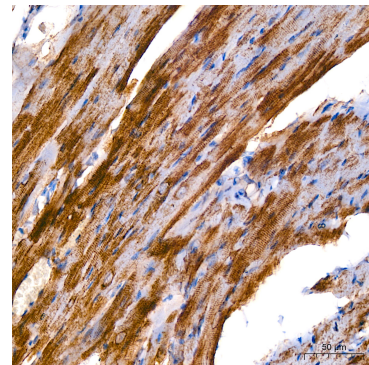
The STORM super-resolution (SR) imaging of COS7 cells using α -Tubulin Rabbit mAb (A6830, ABclonal) at dilution of 1:50 with 3% paraformaldehyde (PFA) + 0.1% glutaraldehyde (GA) fixation. The immunostaining was performed by Full Automatic Immunofluorescence Workflow System (Workflow Ultra300, Nano-Micro imaging, China). Image was performed with Single-Molecule Localization Super-Resolution Microscopy (STORM Ultra300, Nano-Micro imaging, China). We acknowledge Nano-Micro imaging Biotechnology Co., Ltd. (南京纳微成像生物技术有限公司) in SR image processing and kindly providing this image.



Confocal imaging of U-2 OS cells using α -Tubulin Rabbit mAb (A6830, dilution 1:200) followed by a further incubation with Cy3 Goat Anti-Rabbit IgG (H+L) (AS007, dilution 1:500) (Red). The cells were counterstained with α -Tubulin Mouse mAb (AC012, dilution 1:400) followed by incubation with ABflo® 488-conjugated Goat Anti-Mouse IgG (H+L) Ab (AS076, dilution 1:500) (Green). DAPI was used for nuclear staining (Blue). Objective: 100x.

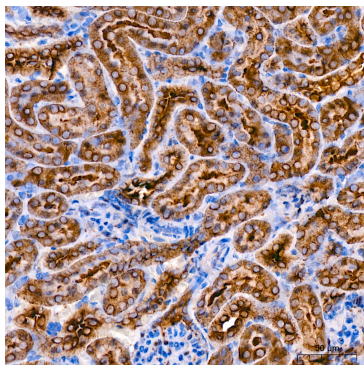


Immunohistochemistry analysis of paraffin-embedded Human colon using α -Tubulin Rabbit mAb (A6830) at dilution of 1:200 (40x lens). High pressure antigen retrieval performed with 0.01M Citrate Bufferr (pH 6.0) prior to IHC staining.



Immunohistochemistry analysis of paraffin-embedded Mouse heart using α -Tubulin Rabbit mAb (A6830) at dilution of 1:200 (40x lens). High pressure antigen retrieval performed with 0.01M Citrate Bufferr (pH 6.0) prior to IHC staining.

Validation Data



Immunohistochemistry analysis of paraffin-embedded Mouse kidney using α -Tubulin Rabbit mAb (A6830) at dilution of 1:200 (40x lens). High pressure antigen retrieval performed with 0.01M Citrate Bufferr (pH 6.0) prior to IHC staining.