

WRN Rabbit pAb

Catalog No.: A6855

1 Publications

Basic Information

Observed MW

200kDa

Calculated MW

162kDa

Category

Primary antibody

Applications

ELISA, WB

Cross-Reactivity

Human

Background

This gene encodes a member of the RecQ subfamily of DNA helicase proteins. The encoded nuclear protein is important in the maintenance of genome stability and plays a role in DNA repair, replication, transcription and telomere maintenance. This protein contains a N-terminal 3' to 5' exonuclease domain, an ATP-dependent helicase domain and RQC (RecQ helicase conserved region) domain in its central region, and a C-terminal HRDC (helicase RNase D C-terminal) domain and nuclear localization signal. Defects in this gene are the cause of Werner syndrome, an autosomal recessive disorder characterized by accelerated aging and an elevated risk for certain cancers.

Recommended Dilutions

WB 1:200 - 1:1000

Immunogen Information

Gene ID

7486

Swiss Prot

Q14191

Immunogen

Recombinant fusion protein containing a sequence corresponding to amino acids 1223-1432 of human WRN (NP_000544.2).

Synonyms

RECQ3; RECQL2; RECQL3; WRN

Contact

☎ | 400-999-6126

✉ | cn.market@abclonal.com.cn

🌐 | www.abclonal.com.cn

Product Information

Source

Rabbit

Isotype

IgG

Purification

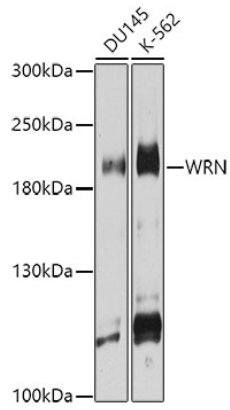
Affinity purification

Storage

Store at -20°C. Avoid freeze / thaw cycles.

Buffer: PBS with 0.02% sodium azide, 50% glycerol, pH7.3.

Validation Data



Western blot analysis of extracts of various cell lines, using WRN antibody (A6855) at 1:1000 dilution.
Secondary antibody: HRP Goat Anti-Rabbit IgG (H+L) (AS014) at 1:10000 dilution.
Lysates/proteins: 25µg per lane.
Blocking buffer: 3% nonfat dry milk in TBST.
Detection: ECL Basic Kit (RM00020).
Exposure time: 15s.