

ENPEP Rabbit pAb

Catalog No.: A6905

Basic Information

Observed MW

109-160kDa

Calculated MW

109kDa

Category

Primary antibody

Applications

ELISA, WB, IHC-P

Cross-Reactivity

Human, Mouse, Rat

Background

The ENPEP gene encodes glutamyl aminopeptidase, a type II integral membrane protein with an extracellular zinc-binding domain. This protein can upregulate blood pressure by cleaving the N-terminal aspartate from angiotensin II, and can regulate blood vessel formation and enhance tumorigenesis in some tissues. Along with ANPEP and DPP4, ENPEP was found to be a candidate co-receptor for the coronavirus SARS-CoV-2, which causes COVID-19.

Recommended Dilutions

WB 1:500 - 1:2000

IHC-P 1:50 - 1:200

Immunogen Information

Gene ID

2028

Swiss Prot

Q07075

Immunogen

Recombinant fusion protein containing a sequence corresponding to amino acids 708-957 of human ENPEP (NP_001968.3).

Synonyms

APA; CD249; gp160; ENPEP

Contact

☎ | 400-999-6126

✉ | cn.market@abclonal.com.cn

🌐 | www.abclonal.com.cn

Product Information

Source

Rabbit

Isotype

IgG

Purification

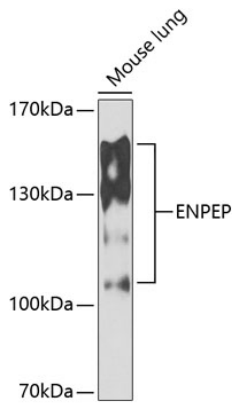
Affinity purification

Storage

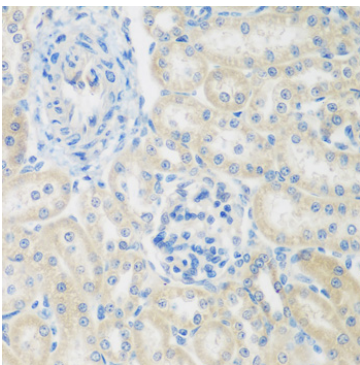
Store at -20°C. Avoid freeze / thaw cycles.

Buffer: PBS with 0.02% sodium azide, 50% glycerol, pH7.3.

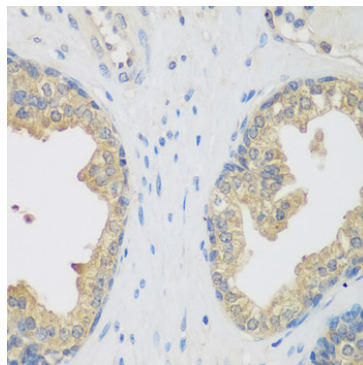
Validation Data



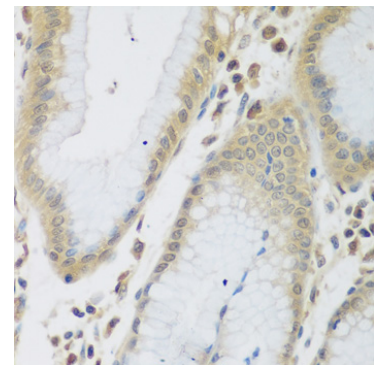
Western blot analysis of lysates from mouse lung, using ENPEP Rabbit pAb (A6905) at 1:1000 dilution. Secondary antibody: HRP Goat Anti-Rabbit IgG (H+L) (AS014) at 1:10000 dilution. Lysates/proteins: 25µg per lane. Blocking buffer: 3% nonfat dry milk in TBST. Detection: ECL Enhanced Kit (RM00021). Exposure time: 90s.



Immunohistochemistry analysis of paraffin-embedded Rat kidney using ENPEP Rabbit pAb (A6905) at dilution of 1:200 (40x lens). Perform microwave antigen retrieval with 10 mM PBS buffer pH 7.2 before commencing with IHC staining protocol.



Immunohistochemistry analysis of paraffin-embedded Human prostate using ENPEP Rabbit pAb (A6905) at dilution of 1:200 (40x lens). Perform microwave antigen retrieval with 10 mM PBS buffer pH 7.2 before commencing with IHC staining protocol.



Immunohistochemistry analysis of paraffin-embedded Human stomach using ENPEP Rabbit pAb (A6905) at dilution of 1:200 (40x lens). Perform microwave antigen retrieval with 10 mM PBS buffer pH 7.2 before commencing with IHC staining protocol.