

PTPRO Rabbit pAb

Catalog No.: A6958

Basic Information

Observed MW

138kDa

Calculated MW

138kDa

Category

Primary antibody

Applications

ELISA, WB

Cross-Reactivity

Mouse

Background

This gene encodes a member of the R3 subtype family of receptor-type protein tyrosine phosphatases. These proteins are localized to the apical surface of polarized cells and may have tissue-specific functions through activation of Src family kinases. This gene contains two distinct promoters, and alternatively spliced transcript variants encoding multiple isoforms have been observed. The encoded proteins may have multiple isoform-specific and tissue-specific functions, including the regulation of osteoclast production and activity, inhibition of cell proliferation and facilitation of apoptosis. This gene is a candidate tumor suppressor, and decreased expression of this gene has been observed in several types of cancer.

Recommended Dilutions

WB 1:500 - 1:1000

Immunogen Information

Gene ID

5800

Swiss Prot

Q16827

Immunogen

Recombinant fusion protein containing a sequence corresponding to amino acids 30-300 of human PTPRO (NP_109592.1).

Synonyms

NPHS6; PTPU2; GLEPP1; PTP-OC; PTP-U2; PTPROT; R-PTP-O; PTPRO

Contact

 | 400-999-6126 | cn.market@abclonal.com.cn | www.abclonal.com.cn

Product Information

Source

Rabbit

Isotype

IgG

Purification

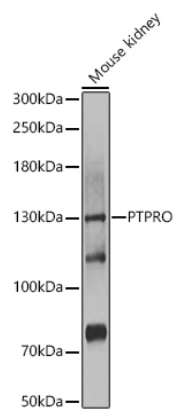
Affinity purification

Storage

Store at -20°C. Avoid freeze / thaw cycles.

Buffer: PBS with 0.02% sodium azide, 50% glycerol, pH 7.3.

Validation Data



Western blot analysis of extracts of Mouse kidney, using PTPRO antibody (A6958) at 1:1000 dilution.
Secondary antibody: HRP Goat Anti-Rabbit IgG (H+L) (AS014) at 1:10000 dilution.
Lysates/proteins: 25µg per lane.
Blocking buffer: 3% nonfat dry milk in TBST.
Detection: ECL Basic Kit (RM00020).
Exposure time: 10s.