

# PYCR1 Rabbit pAb

Catalog No.: A6959

## Basic Information

### Observed MW

36kDa

### Calculated MW

33kDa

### Category

Primary antibody

### Applications

ELISA, WB

### Cross-Reactivity

Human, Mouse, Rat

## Background

This gene encodes an enzyme that catalyzes the NAD(P)H-dependent conversion of pyrroline-5-carboxylate to proline. This enzyme may also play a physiologic role in the generation of NADP(+) in some cell types. The protein forms a homopolymer and localizes to the mitochondrion. Alternative splicing results in multiple transcript variants.

## Recommended Dilutions

WB 1:500 - 1:2000

## Immunogen Information

### Gene ID

5831

### Swiss Prot

P32322

### Immunogen

Recombinant fusion protein containing a sequence corresponding to amino acids 1-319 of human PYCR1 (NP\_008838.2).

### Synonyms

P5C; P5CR; PRO3; PYCR; PIG45; PP222; ARCL2B; ARCL3B; PYCR1

## Contact

☎ | 400-999-6126

✉ | [cn.market@abclonal.com.cn](mailto:cn.market@abclonal.com.cn)

🌐 | [www.abclonal.com.cn](http://www.abclonal.com.cn)

## Product Information

### Source

Rabbit

### Isotype

IgG

### Purification

Affinity purification

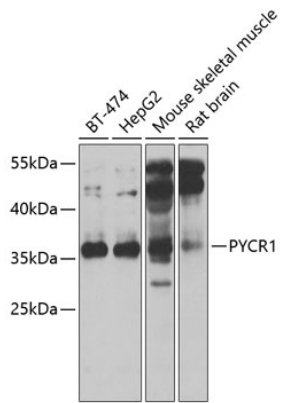
### Storage

Store at -20°C. Avoid freeze / thaw cycles.

Buffer: PBS with 0.02% sodium azide, 50% glycerol, pH 7.3.

## Validation Data

---



Western blot analysis of extracts of various cell lines, using PYCR1 antibody (A6959) at 1:1000 dilution.  
Secondary antibody: HRP Goat Anti-Rabbit IgG (H+L) (AS014) at 1:10000 dilution.  
Lysates/proteins: 25µg per lane.  
Blocking buffer: 3% nonfat dry milk in TBST.  
Detection: ECL Basic Kit (RM00020).  
Exposure time: 30s.