

RBBP5 Rabbit pAb

Catalog No.: A6965

2 Publications

Basic Information

Observed MW

70kDa

Calculated MW

59kDa

Category

Primary antibody

Applications

ELISA, WB, IHC-P, IF/ICC, IP

Cross-Reactivity

Human, Mouse, Rat

Background

This gene encodes a ubiquitously expressed nuclear protein which belongs to a highly conserved subfamily of WD-repeat proteins. The encoded protein binds directly to retinoblastoma protein, which regulates cell proliferation. It interacts preferentially with the underphosphorylated retinoblastoma protein via the E1A-binding pocket B. Three alternatively spliced transcript variants that encode different protein isoforms have been described for this gene.

Recommended Dilutions

WB	1:500 - 1:2000
IHC-P	1:50 - 1:200
IF/ICC	1:50 - 1:100
IP	0.5µg-4µg antibody for 200µg-400µg extracts of whole cells

Contact

☎ | 400-999-6126

✉ | cn.market@abclonal.com.cn

🌐 | www.abclonal.com.cn

Immunogen Information

Gene ID

5929

Swiss Prot

Q15291

Immunogen

Recombinant fusion protein containing a sequence corresponding to amino acids 319-538 of human RBBP5 (NP_005048.2).

Synonyms

RBQ3; SWD1; RBBP5

Product Information

Source

Rabbit

Isotype

IgG

Purification

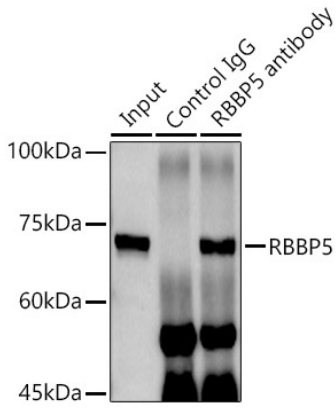
Affinity purification

Storage

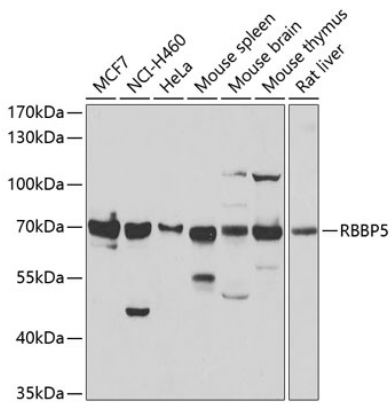
Store at -20°C. Avoid freeze / thaw cycles.

Buffer: PBS with 0.02% sodium azide, 50% glycerol, pH7.3.

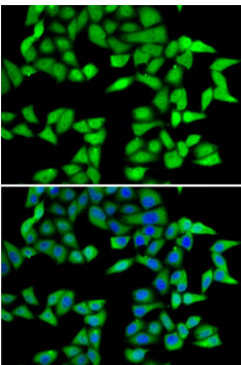
Validation Data



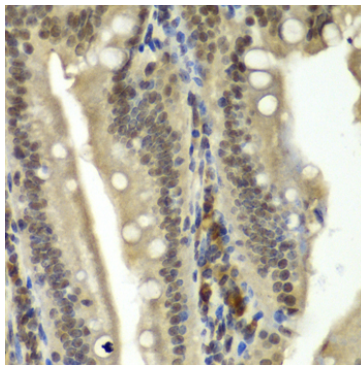
Immunoprecipitation analysis of 300 µg extracts of MCF7 cells using 3 µg RBBP5 antibody (A6965). Western blot was performed from the immunoprecipitate using RBBP5 antibody (A6965) at a dilution of 1:1000.



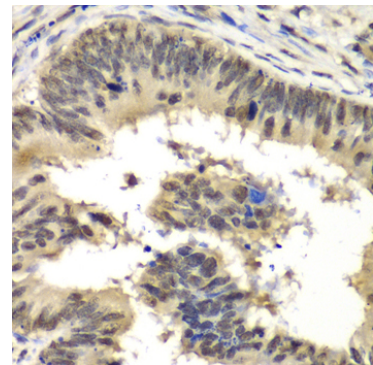
Western blot analysis of various lysates using RBBP5 Rabbit pAb (A6965) at 1:1000 dilution. Secondary antibody: HRP Goat Anti-Rabbit IgG (H+L) (AS014) at 1:10000 dilution. Lysates/proteins: 25µg per lane. Blocking buffer: 3% nonfat dry milk in TBST. Detection: ECL Basic Kit (RM00020). Exposure time: 10s.



Immunofluorescence analysis of A-549 cells using RBBP5 Rabbit pAb (A6965). Secondary antibody: Cy3 Goat Anti-Rabbit IgG (H+L) (AS007) at 1:500 dilution. Blue: DAPI for nuclear staining.

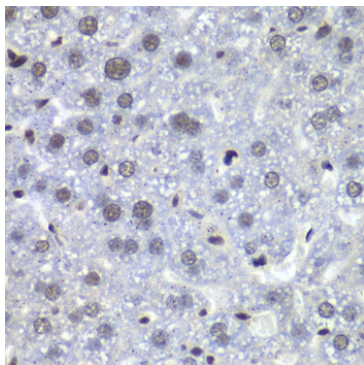


Immunohistochemistry analysis of paraffin-embedded Rat Intestine using RBBP5 Rabbit pAb (A6965) at dilution of 1:100 (40x lens). Perform microwave antigen retrieval with 10 mM PBS buffer pH 7.2 before commencing with IHC staining protocol.



Immunohistochemistry analysis of paraffin-embedded Human colon carcinoma using RBBP5 Rabbit pAb (A6965) at dilution of 1:100 (40x lens). Perform microwave antigen retrieval with 10 mM PBS buffer pH 7.2 before commencing with IHC staining protocol.

Validation Data



Immunohistochemistry analysis of paraffin-embedded Mouse liver using RBBP5 Rabbit pAb (A6965) at dilution of 1:100 (40x lens). Perform microwave antigen retrieval with 10 mM PBS buffer pH 7.2 before commencing with IHC staining protocol.