

SGCB Rabbit pAb

Catalog No.: A6979

1 Publications

Basic Information

Observed MW

45kDa

Calculated MW

35kDa

Category

Primary antibody

Applications

ELISA, WB

Cross-Reactivity

Human, Mouse, Rat

Background

This gene encodes a member of the sarcoglycan family. Sarcoglycans are transmembrane components in the dystrophin-glycoprotein complex which help stabilize the muscle fiber membranes and link the muscle cytoskeleton to the extracellular matrix. Mutations in this gene have been associated with limb-girdle muscular dystrophy.

Recommended Dilutions

WB 1:500 - 1:2000

Immunogen Information

Gene ID

6443

Swiss Prot

Q16585

Immunogen

Recombinant fusion protein containing a sequence corresponding to amino acids 94-318 of human SGCB (NP_000223.1).

Synonyms

A3b; SGC; LGMD2E; LGMDR4; SGCB

Contact

☎ | 400-999-6126

✉ | cn.market@abclonal.com.cn

🌐 | www.abclonal.com.cn

Product Information

Source

Rabbit

Isotype

IgG

Purification

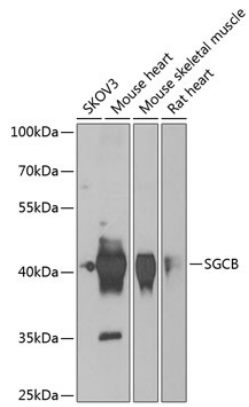
Affinity purification

Storage

Store at -20°C. Avoid freeze / thaw cycles.

Buffer: PBS with 0.02% sodium azide, 50% glycerol, pH 7.3.

Validation Data



Western blot analysis of extracts of various cell lines, using SGCB antibody (A6979) at 1:1000 dilution.
Secondary antibody: HRP Goat Anti-Rabbit IgG (H+L) (AS014) at 1:10000 dilution.
Lysates/proteins: 25µg per lane.
Blocking buffer: 3% nonfat dry milk in TBST.
Detection: ECL Basic Kit (RM00020).
Exposure time: 90s.