

# SSX2 Rabbit pAb

**Catalog No.: A6989**

## Basic Information

**Observed MW**

22kDa

**Calculated MW**

22kDa

**Category**

Primary antibody

**Applications**

ELISA,WB

**Cross-Reactivity**

Human

## Background

The product of this gene belongs to the family of highly homologous synovial sarcoma X (SSX) breakpoint proteins. These proteins may function as transcriptional repressors. They are also capable of eliciting spontaneous humoral and cellular immune responses in cancer patients, and are potentially useful targets in cancer vaccine-based immunotherapy. This gene, and also the SSX1 and SSX4 family members, have been involved in t(X;18)(p11.2;q11.2) translocations that are characteristically found in all synovial sarcomas. This translocation results in the fusion of the synovial sarcoma translocation gene on chromosome 18 to one of the SSX genes on chromosome X. The encoded hybrid proteins are likely responsible for transforming activity. Alternative splicing of this gene results in multiple transcript variants. This gene also has an identical duplicate, GeneID: 727837, located about 45 kb downstream in the opposite orientation on chromosome X.

## Recommended Dilutions

**WB** 1:500 - 1:2000

## Immunogen Information

**Gene ID**

6757

**Swiss Prot**

Q16385

**Immunogen**

Recombinant fusion protein containing a sequence corresponding to amino acids 1-188 of human SSX2 (NP\_783629.1).

**Synonyms**

SSX; HD21; CT5.2; CT5.2A; HOM-MEL-40; SSX2

## Contact

 | 400-999-6126 | [cn.market@abclonal.com.cn](mailto:cn.market@abclonal.com.cn) | [www.abclonal.com.cn](http://www.abclonal.com.cn)

## Product Information

**Source**

Rabbit

**Isotype**

IgG

**Purification**

Affinity purification

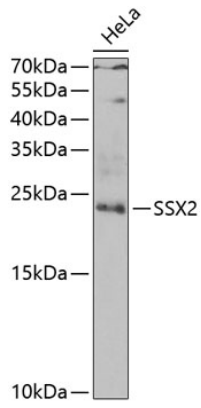
**Storage**

Store at -20°C. Avoid freeze / thaw cycles.

Buffer: PBS with 0.02% sodium azide,50% glycerol,pH7.3.

## Validation Data

---



Western blot analysis of extracts of HeLa cells, using SSX2 antibody (A6989) at 1:1000 dilution.  
Secondary antibody: HRP Goat Anti-Rabbit IgG (H+L) (AS014) at 1:10000 dilution.  
Lysates/proteins: 25µg per lane.  
Blocking buffer: 3% nonfat dry milk in TBST.  
Detection: ECL Basic Kit (RM00020).  
Exposure time: 90s.