

# WRB Rabbit pAb

**Catalog No.: A7000**

## Basic Information

### Observed MW

25kDa

### Calculated MW

20kDa

### Category

Primary antibody

### Applications

ELISA, WB, IHC-P

### Cross-Reactivity

Mouse, Rat

## Background

This gene is located in the candidate region for congenital heart disease (CHD) in Down syndrome (DS). It encodes a basic protein that functions as a receptor that promotes insertion of tail-anchored proteins in the endoplasmic reticulum membrane. This gene is located at a maternally-methylated differentially methylated region (DMR); however, its transcription may be biallelic, not imprinted. Alternative splicing results in different transcript variants. A pseudogene has been defined on chromosome 4.

## Recommended Dilutions

**WB** 1:500 - 1:2000

**IHC-P** 1:50 - 1:200

## Immunogen Information

### Gene ID

7485

### Swiss Prot

O00258

### Immunogen

Recombinant fusion protein containing a sequence corresponding to amino acids 30-100 of human WRB (NP\_004618.2).

### Synonyms

WRB; CHD5

## Contact

☎ | 400-999-6126

✉ | [cn.market@abclonal.com.cn](mailto:cn.market@abclonal.com.cn)

🌐 | [www.abclonal.com.cn](http://www.abclonal.com.cn)

## Product Information

### Source

Rabbit

### Isotype

IgG

### Purification

Affinity purification

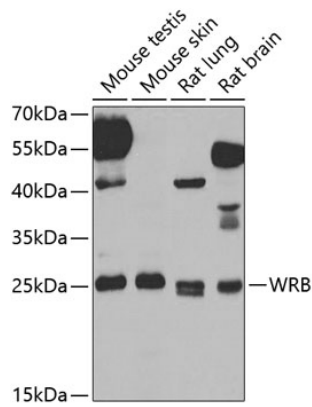
### Storage

Store at -20°C. Avoid freeze / thaw cycles.

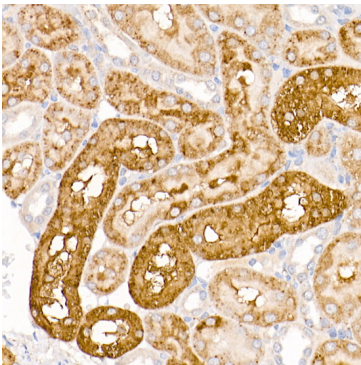
Buffer: PBS with 0.02% sodium azide, 50% glycerol, pH7.3.

## Validation Data

---



Western blot analysis of various lysates using WRB Rabbit pAb (A7000) at 1:1000 dilution.  
Secondary antibody: HRP Goat Anti-Rabbit IgG (H+L) (AS014) at 1:10000 dilution.  
Lysates/proteins: 25µg per lane.  
Blocking buffer: 3% nonfat dry milk in TBST.  
Detection: ECL Basic Kit (RM00020).  
Exposure time: 90s.



Immunohistochemistry analysis of paraffin-embedded Rat kidney using WRB Rabbit pAb (A7000) at dilution of 1:200 (40x lens).  
Perform high pressure antigen retrieval with 10 mM citrate buffer pH 6.0 before commencing with IHC staining protocol.