

# SEMA3B Rabbit pAb

Catalog No.: A7004 **1 Publications**

## Basic Information

### Observed MW

83kDa

### Calculated MW

83kDa

### Category

Primary antibody

### Applications

ELISA, WB

### Cross-Reactivity

Human, Mouse

## Background

The protein encoded by this gene belongs to the class-3 semaphorin/collapsin family, whose members function in growth cone guidance during neuronal development. This family member inhibits axonal extension and has been shown to act as a tumor suppressor by inducing apoptosis. Alternative splicing of this gene results in multiple transcript variants.

## Recommended Dilutions

WB 1:500 - 1:2000

## Immunogen Information

### Gene ID

7869

### Swiss Prot

Q13214

### Immunogen

Recombinant fusion protein containing a sequence corresponding to amino acids 569-748 of human SEMA3B (NP\_001005914.1).

### Synonyms

SemaA; SEMA5; SEMAA; semaV; LUCA-1; SEMA3B

## Contact

 | 400-999-6126

 | [cn.market@abclonal.com.cn](mailto:cn.market@abclonal.com.cn)

 | [www.abclonal.com.cn](http://www.abclonal.com.cn)

## Product Information

### Source

Rabbit

### Isotype

IgG

### Purification

Affinity purification

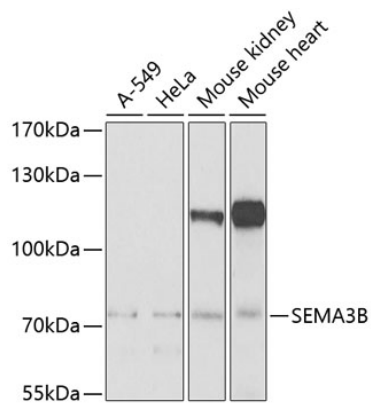
### Storage

Store at -20°C. Avoid freeze / thaw cycles.

Buffer: PBS with 0.02% sodium azide, 50% glycerol, pH 7.3.

## Validation Data

---



Western blot analysis of extracts of various cell lines, using SEMA3B Antibody (A7004) at 1:1000 dilution.  
Secondary antibody: HRP Goat Anti-Rabbit IgG (H+L) (AS014) at 1:10000 dilution.  
Lysates/proteins: 25µg per lane.  
Blocking buffer: 3% nonfat dry milk in TBST.  
Detection: ECL Basic Kit (RM00020).  
Exposure time: 90s.