

ASMTL Rabbit pAb

Catalog No.: A7021

Basic Information

Observed MW

72kDa

Calculated MW

69kDa

Category

Primary antibody

Applications

ELISA, WB, IP

Cross-Reactivity

Human, Mouse

Background

The protein encoded by this gene has an N-terminus that is similar to the multicopy associated filamentation (maf) protein of *Bacillus subtilis* and to orfE of *Escherichia coli*, while the C-terminus is similar to N-acetylserotonin O-methyltransferase. This gene is located in the pseudoautosomal region 1 (PAR1) of X and Y chromosomes. Three transcript variants encoding different isoforms have been found for this gene.

Recommended Dilutions

WB 1:500 - 1:2000

IP 0.5µg-4µg antibody for
200µg-400µg extracts of
whole cells

Immunogen Information

Gene ID

8623

Swiss Prot

O95671

Immunogen

Recombinant fusion protein containing a sequence corresponding to amino acids 1-290 of human ASMTL (NP_004183.2).

Synonyms

ASTML; ASMTLX; ASMTLY; ASMTL

Contact

 | 400-999-6126

 | cn.market@abclonal.com.cn

 | www.abclonal.com.cn

Product Information

Source

Rabbit

Isotype

IgG

Purification

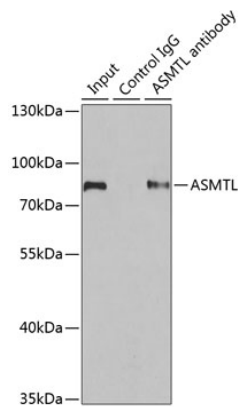
Affinity purification

Storage

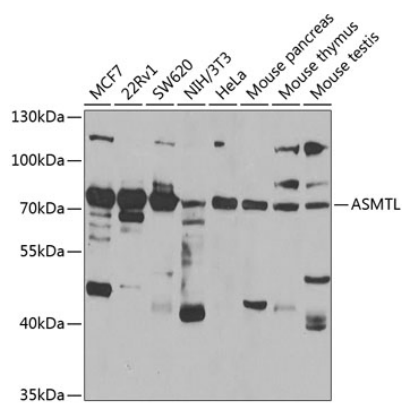
Store at -20°C. Avoid freeze / thaw cycles.

Buffer: PBS with 0.02% sodium azide, 50% glycerol, pH7.3.

Validation Data



Immunoprecipitation analysis of 200 µg extracts of SW620 cells using 1 µg ASMTL antibody (A7021). Western blot was performed from the immunoprecipitate using ASMTL antibody (A7021) at a dilution of 1:500.



Western blot analysis of various lysates using ASMTL Rabbit pAb (A7021) at 1:1000 dilution. Secondary antibody: HRP Goat Anti-Rabbit IgG (H+L) (AS014) at 1:10000 dilution. Lysates/proteins: 25µg per lane. Blocking buffer: 3% nonfat dry milk in TBST.