

EIF3F Rabbit pAb

Catalog No.: A7023

3 Publications

Basic Information

Observed MW

38kDa

Calculated MW

38kDa

Category

Primary antibody

Applications

ELISA, WB, IHC-P, IF/ICC, IP

Cross-Reactivity

Human, Mouse, Rat

Background

Enables deubiquitinase activity and identical protein binding activity. Contributes to translation initiation factor activity. Involved in IRES-dependent viral translational initiation; protein deubiquitination; and translational initiation. Located in membrane. Part of eukaryotic translation initiation factor 3 complex. Implicated in autosomal recessive non-syndromic intellectual disability.

Recommended Dilutions

WB	1:500 - 1:1000
IHC-P	1:50 - 1:200
IF/ICC	1:50 - 1:200
IP	0.5µg-4µg antibody for 200µg-400µg extracts of whole cells

Immunogen Information

Gene ID

8665

Swiss Prot

O00303

Immunogen

Recombinant fusion protein containing a sequence corresponding to amino acids 88-357 of human EIF3F (NP_003745.1).

Synonyms

MRT67; EIF3S5; eIF3-p47; EIF3F

Contact

☎	400-999-6126
✉	cn.market@abclonal.com.cn
🌐	www.abclonal.com.cn

Product Information

Source

Rabbit

Isotype

IgG

Purification

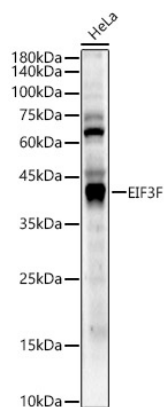
Affinity purification

Storage

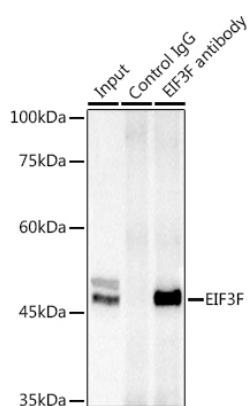
Store at -20°C. Avoid freeze / thaw cycles.

Buffer: PBS with 0.02% sodium azide, 50% glycerol, pH7.3.

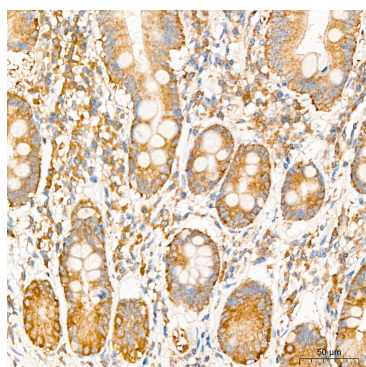
Validation Data



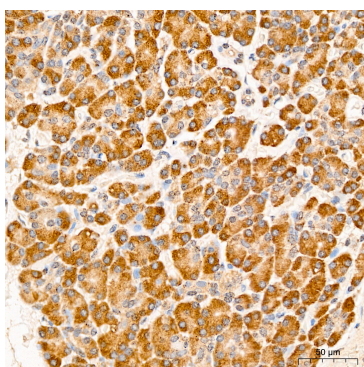
Western blot analysis of lysates from HeLa cells, using EIF3F Rabbit pAb (A7023) at 1:1000 dilution.
 Secondary antibody: HRP Goat Anti-Rabbit IgG (H+L) (AS014) at 1:10000 dilution.
 Lysates/proteins: 25µg per lane.
 Blocking buffer: 3% nonfat dry milk in TBST.
 Detection: ECL Enhanced Kit (RM00021).
 Exposure time: 60s.



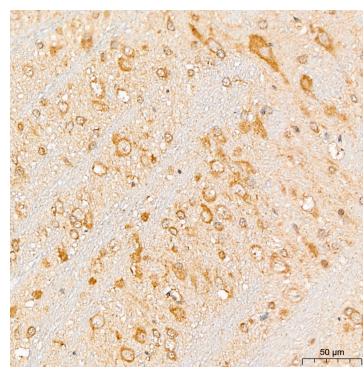
Immunoprecipitation analysis of 300 µg extracts of Jurkat cells using 3 µg EIF3F antibody (A7023).
 Western blot was performed from the immunoprecipitate using EIF3F antibody (A7023) at a dilution of 1:1000.



Immunohistochemistry analysis of EIF3F in paraffin-embedded Human colon tissue using EIF3F Rabbit pAb (A7023) at a dilution of 1:200 (40x lens). High pressure antigen retrieval was performed with 0.01 M citrate buffer (pH 6.0) prior to IHC staining.

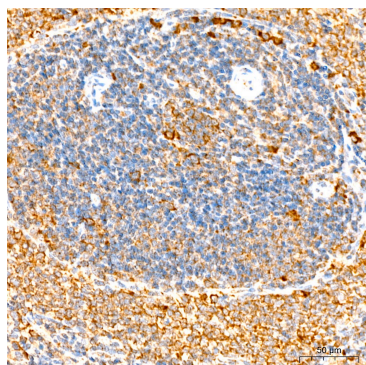


Immunohistochemistry analysis of EIF3F in paraffin-embedded Human pancreas tissue using EIF3F Rabbit pAb (A7023) at a dilution of 1:200 (40x lens). High pressure antigen retrieval was performed with 0.01 M citrate buffer (pH 6.0) prior to IHC staining.

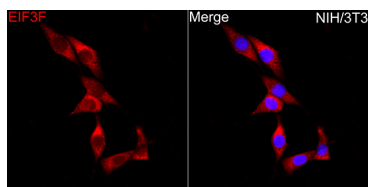


Immunohistochemistry analysis of EIF3F in paraffin-embedded Rat brain tissue using EIF3F Rabbit pAb (A7023) at a dilution of 1:200 (40x lens). High pressure antigen retrieval was performed with 0.01 M citrate buffer (pH 6.0) prior to IHC staining.

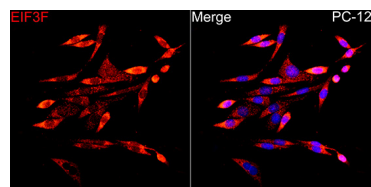
Validation Data



Immunohistochemistry analysis of EIF3F in paraffin-embedded Mouse spleen tissue using EIF3F Rabbit pAb (A7023) at a dilution of 1:200 (40x lens). High pressure antigen retrieval was performed with 0.01 M citrate buffer (pH 6.0) prior to IHC staining.



Immunofluorescence analysis of NIH/3T3 cells using EIF3F Rabbit pAb (A7023) at dilution of 1:200 (40x lens). Secondary antibody: Cy3 Goat Anti-Rabbit IgG (H+L) (AS007) at 1:500 dilution. Blue: DAPI for nuclear staining.



Immunofluorescence analysis of PC-12 cells using EIF3F Rabbit pAb (A7023) at dilution of 1:200 (40x lens). Secondary antibody: Cy3 Goat Anti-Rabbit IgG (H+L) (AS007) at 1:500 dilution. Blue: DAPI for nuclear staining.