

EFTUD2 Rabbit pAb

Catalog No.: A7040 **3 Publications**

Basic Information

Observed MW

130kDa

Calculated MW

109kDa

Category

Primary antibody

Applications

ELISA, WB, IHC-P, IF/ICC, IP

Cross-Reactivity

Human, Mouse, Rat

Background

This gene encodes a GTPase which is a component of the spliceosome complex which processes precursor mRNAs to produce mature mRNAs. Mutations in this gene are associated with mandibulofacial dysostosis with microcephaly. Multiple transcript variants encoding different isoforms have been found for this gene.

Recommended Dilutions

WB	1:500 - 1:1000
IHC-P	1:50 - 1:200
IF/ICC	1:50 - 1:100
IP	0.5µg-4µg antibody for 200µg-400µg extracts of whole cells

Immunogen Information

Gene ID

9343

Swiss Prot

Q15029

Immunogen

Recombinant fusion protein containing a sequence corresponding to amino acids 1-205 of human EFTUD2 (NP_004238.3).

Synonyms

MFDM; MFDGA; Snu114; Snrp116; SNRNP116; U5-116KD; EFTUD2

Contact

☎ | 400-999-6126

✉ | cn.market@abclonal.com.cn

🌐 | www.abclonal.com.cn

Product Information

Source

Rabbit

Isotype

IgG

Purification

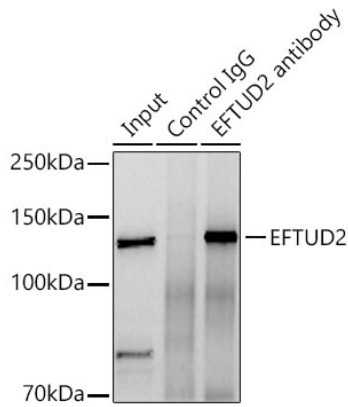
Affinity purification

Storage

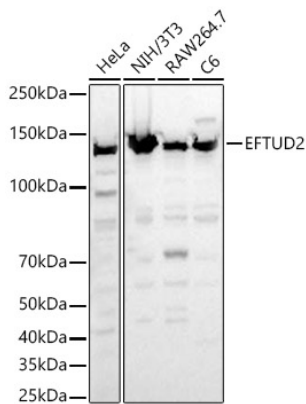
Store at -20°C. Avoid freeze / thaw cycles.

Buffer: PBS with 0.02% sodium azide, 50% glycerol, pH7.3.

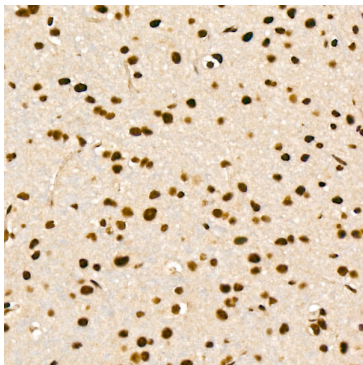
Validation Data



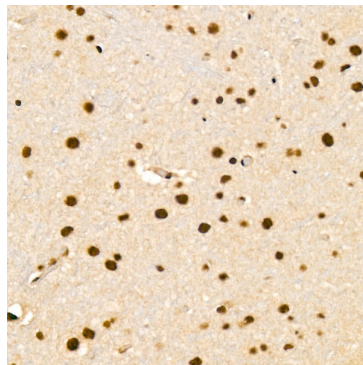
Immunoprecipitation analysis of 300 µg extracts of NTH-3T3 cells using 3 µg EFTUD2 Rabbit pAb (A7040). Western blot was performed from the immunoprecipitate using EFTUD2 Rabbit pAb (A7040) at a dilution of 1:2000.



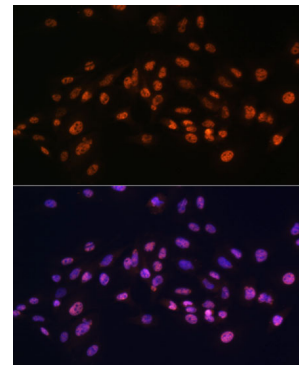
Western blot analysis of various lysates, using EFTUD2 Rabbit pAb (A7040) at 1:1000 dilution. Secondary antibody: HRP Goat Anti-Rabbit IgG (H+L) (AS014) at 1:10000 dilution. Lysates/proteins: 25µg per lane. Blocking buffer: 3% nonfat dry milk in TBST. Detection: ECL Basic Kit (RM00020). Exposure time: 30s.



Immunohistochemistry analysis of EFTUD2 in paraffin-embedded mouse brain tissue using EFTUD2 Rabbit pAb (A7040) at a dilution of 1:100 (40x lens). High pressure antigen retrieval was performed with 0.01 M citrate buffer (pH 6.0) prior to IHC staining.

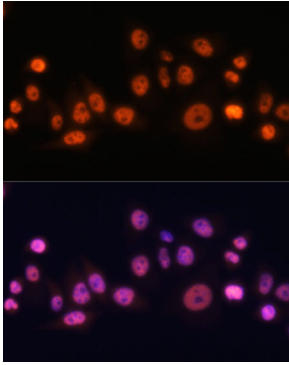


Immunohistochemistry analysis of EFTUD2 in paraffin-embedded rat brain tissue using EFTUD2 Rabbit pAb (A7040) at a dilution of 1:100 (40x lens). High pressure antigen retrieval was performed with 0.01 M citrate buffer (pH 6.0) prior to IHC staining.

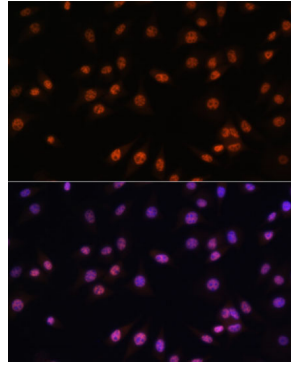


Immunofluorescence analysis of C6 cells using EFTUD2 Rabbit pAb (A7040) at dilution of 1:100. Secondary antibody: Cy3 Goat Anti-Rabbit IgG (H+L) (AS007) at 1:500 dilution. Blue: DAPI for nuclear staining.

Validation Data



Immunofluorescence analysis of HeLa cells using EFTUD2 Rabbit pAb (A7040) at dilution of 1:100. Secondary antibody: Cy3 Goat Anti-Rabbit IgG (H+L) (AS007) at 1:500 dilution. Blue: DAPI for nuclear staining.



Immunofluorescence analysis of L929 cells using EFTUD2 Rabbit pAb (A7040) at dilution of 1:100. Secondary antibody: Cy3 Goat Anti-Rabbit IgG (H+L) (AS007) at 1:500 dilution. Blue: DAPI for nuclear staining.