

# ECE2 Rabbit pAb

Catalog No.: A7049 **1 Publications**

## Basic Information

### Observed MW

90kDa

### Calculated MW

28kDa/83kDa/86kDa/91kDa/99kDa

### Category

Primary antibody

### Applications

ELISA, WB

### Cross-Reactivity

Human, Mouse

## Background

Enables metalloendopeptidase activity. Involved in peptide hormone processing. Located in cytoplasmic vesicle membrane.

## Recommended Dilutions

WB 1:500 - 1:2000

## Immunogen Information

### Gene ID

9718

### Swiss Prot

O60344

### Immunogen

Recombinant fusion protein containing a sequence corresponding to amino acids 1-160 of human ECE2 (NP\_115707.2).

### Synonyms

EEF1AKMT4; ECE2

## Contact

 | 400-999-6126

 | [cn.market@abclonal.com.cn](mailto:cn.market@abclonal.com.cn)

 | [www.abclonal.com.cn](http://www.abclonal.com.cn)

## Product Information

### Source

Rabbit

### Isotype

IgG

### Purification

Affinity purification

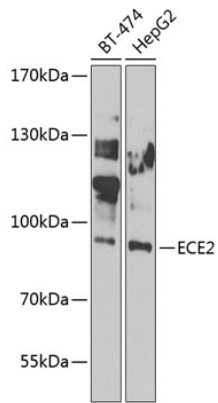
### Storage

Store at -20°C. Avoid freeze / thaw cycles.

Buffer: PBS with 0.02% sodium azide, 50% glycerol, pH 7.3.

## Validation Data

---



Western blot analysis of extracts of various cell lines, using ECE2 antibody (A7049) at 1:1000 dilution.  
Secondary antibody: HRP Goat Anti-Rabbit IgG (H+L) (AS014) at 1:10000 dilution.  
Lysates/proteins: 25µg per lane.  
Blocking buffer: 3% nonfat dry milk in TBST.  
Detection: ECL Enhanced Kit (RM00021).  
Exposure time: 30s.