

NUTF2 Rabbit pAb

Catalog No.: A7057 **1 Publications**

Basic Information

Observed MW

15kDa

Calculated MW

14kDa

Category

Primary antibody

Applications

ELISA, WB

Cross-Reactivity

Human, Mouse, Rat

Background

This gene encodes a cytosolic factor that facilitates protein transport into the nucleus. The encoded protein is required for nuclear import of the small Ras-like GTPase, Ran which is involved in numerous cellular processes. This protein also interacts with the nuclear pore complex glycoprotein p62.

Recommended Dilutions

WB 1:500 - 1:2000

Immunogen Information

Gene ID

10204

Swiss Prot

P61970

Immunogen

Recombinant fusion protein containing a sequence corresponding to amino acids 1-127 of human NUTF2 (NP_005787.1).

Synonyms

NTF2; PP15; NTF-2; NUTF2

Contact

 | 400-999-6126

 | cn.market@abclonal.com.cn

 | www.abclonal.com.cn

Product Information

Source

Rabbit

Isotype

IgG

Purification

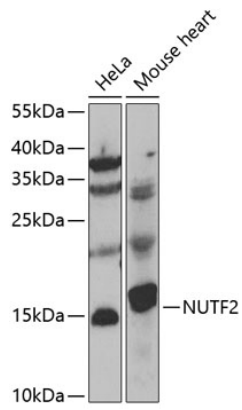
Affinity purification

Storage

Store at -20°C. Avoid freeze / thaw cycles.

Buffer: PBS with 0.02% sodium azide, 50% glycerol, pH7.3.

Validation Data



Western blot analysis of various lysates using NUTF2 Rabbit pAb (A7057) at 1:1000 dilution.
Secondary antibody: HRP Goat Anti-Rabbit IgG (H+L) (AS014) at 1:10000 dilution.
Lysates/proteins: 25µg per lane.
Blocking buffer: 3% nonfat dry milk in TBST.
Detection: ECL Basic Kit (RM00020).
Exposure time: 90s.