

COPS6 Rabbit pAb

Catalog No.: A7072 **2 Publications**

Basic Information

Observed MW

35kDa

Calculated MW

36kDa

Category

Primary antibody

Applications

ELISA,WB,IF/ICC

Cross-Reactivity

Human, Mouse, Rat

Background

The protein encoded by this gene is one of the eight subunits of COP9 signalosome, a highly conserved protein complex that functions as an important regulator in multiple signaling pathways. The structure and function of COP9 signalosome is similar to that of the 19S regulatory particle of 26S proteasome. COP9 signalosome has been shown to interact with SCF-type E3 ubiquitin ligases and act as a positive regulator of E3 ubiquitin ligases. This protein belongs to translation initiation factor 3 (eIF3) superfamily. It is involved in the regulation of cell cycle and likely to be a cellular cofactor for HIV-1 accessory gene product Vpr.

Recommended Dilutions

WB	1:100 - 1:500
IF/ICC	1:50 - 1:100

Immunogen Information

Gene ID

10980

Swiss Prot

Q7L5N1

Immunogen

Recombinant fusion protein containing a sequence corresponding to amino acids 58-327 of human COPS6 (NP_006824.2).

Synonyms

CSN6; MOV34-34KD; COPS6

Contact

 | 400-999-6126 | cn.market@abclonal.com.cn | www.abclonal.com.cn

Product Information

Source

Rabbit

Isotype

IgG

Purification

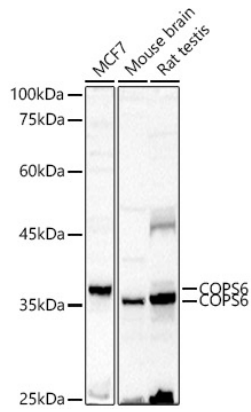
Affinity purification

Storage

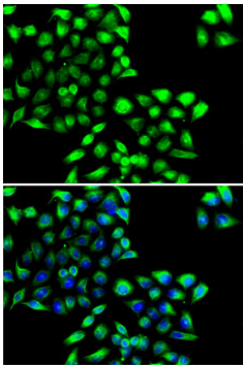
Store at -20°C. Avoid freeze / thaw cycles.

Buffer: PBS with 0.05% proclin300,50% glycerol,pH7.3.

Validation Data



Western blot analysis of extracts of various cell lines, using COPS6 antibody (A7072) at 1:500 dilution.
Secondary antibody: HRP Goat Anti-Rabbit IgG (H+L) (AS014) at 1:10000 dilution.
Lysates/proteins: 25 μ g per lane.
Blocking buffer: 3% nonfat dry milk in TBST.
Detection: ECL Basic Kit (RM00020).
Exposure time: 60s.



Immunofluorescence analysis of MCF7 cells using COPS6 antibody (A7072). Blue: DAPI for nuclear staining.