

FKBP38/FKBP8 Rabbit pAb

Catalog No.: A7085

1 Publications

Basic Information

Observed MW

55kDa

Calculated MW

45kDa

Category

Primary antibody

Applications

WB,IF/ICC,IP,ELISA

Cross-Reactivity

Human, Mouse, Rat

Background

The protein encoded by this gene is a member of the immunophilin protein family, which play a role in immunoregulation and basic cellular processes involving protein folding and trafficking. Unlike the other members of the family, this encoded protein does not seem to have PPlase/rotamase activity. It may have a role in neurons associated with memory function.

Recommended Dilutions

WB 1:500 - 1:2000

IF/ICC 1:50 - 1:100

IP 0.5µg-4µg antibody for
200µg-400µg extracts of
whole cells

ELISA Recommended starting
concentration is 1 µg/mL.
Please optimize the
concentration based on
your specific assay
requirements.

Immunogen Information

Gene ID

23770

Swiss Prot

Q14318

Immunogen

Recombinant protein (or fragment). This information is considered to be commercially sensitive.

Synonyms

FKBP38; FKBP38; FKBP38/FKBP8

Contact

☎ | 400-999-6126

✉ | cn.market@abclonal.com.cn

🌐 | www.abclonal.com.cn

Product Information

Source

Rabbit

Isotype

IgG

Purification

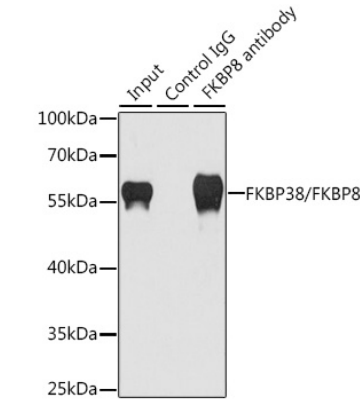
Affinity purification

Storage

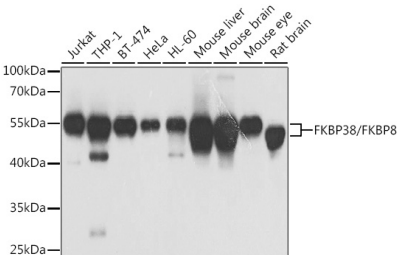
Store at -20°C. Avoid freeze / thaw cycles.

Buffer: PBS with 0.02% sodium azide, 50% glycerol, pH7.3.

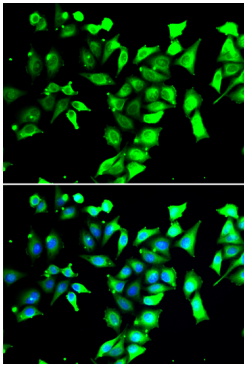
Validation Data



Immunoprecipitation analysis of 200 µg extracts of HeLa cells using 1 µg FKBP38/FKBP38/FKBP8 antibody (A7085). Western blot was performed from the immunoprecipitate using FKBP38/FKBP38/FKBP8 antibody (A7085) at a dilution of 1:1000.



Western blot analysis of various lysates using FKBP38/FKBP8 Rabbit pAb (A7085) at 1:1000 dilution. Secondary antibody: HRP-conjugated Goat anti-Rabbit IgG (H+L) (AS014) at 1:10000 dilution. Lysates/proteins: 25µg per lane. Blocking buffer: 3% nonfat dry milk in TBST. Detection: ECL Basic Kit (RM00020). Exposure time: 5s.



Immunofluorescence analysis of A549 cells using FKBP38/FKBP8 Rabbit pAb (A7085). Secondary antibody: Cy3-conjugated Goat anti-Rabbit IgG (H+L) (AS007) at 1:500 dilution. Blue: DAPI for nuclear staining.