

LMOD1 Rabbit pAb

Catalog No.: A7087

Basic Information

Observed MW

Refer to figures

Calculated MW

67kDa

Category

Primary antibody

Applications

ELISA, WB, IHC-P

Cross-Reactivity

Human

Background

The leiomodin 1 protein has a putative membrane-spanning region and 2 types of tandemly repeated blocks. The transcript is expressed in all tissues tested, with the highest levels in thyroid, eye muscle, skeletal muscle, and ovary. Increased expression of leiomodin 1 may be linked to Graves' disease and thyroid-associated ophthalmopathy.

Recommended Dilutions

WB 1:500 - 1:2000

IHC-P 1:50 - 1:200

Immunogen Information

Gene ID

25802

Swiss Prot

P29536

Immunogen

Recombinant fusion protein containing a sequence corresponding to amino acids 29-187 of human LMOD1 (NP_036266.2).

Synonyms

1D; D1; 64kD; MMIHS3; SMLMOD; SM-LMOD; LMOD1

Contact

☎ | 400-999-6126

✉ | cn.market@abclonal.com.cn

🌐 | www.abclonal.com.cn

Product Information

Source

Rabbit

Isotype

IgG

Purification

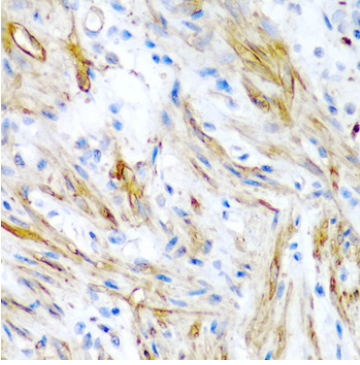
Affinity purification

Storage

Store at -20°C. Avoid freeze / thaw cycles.

Buffer: PBS with 0.02% sodium azide, 50% glycerol, pH 7.3.

Validation Data



Immunohistochemistry analysis of paraffin-embedded Human colon using LMOD1 Rabbit pAb (A7087) at dilution of 1:200 (40x lens). Perform microwave antigen retrieval with 10 mM PBS buffer pH 7.2 before commencing with IHC staining protocol.