

LDLRAP1 Rabbit pAb

Catalog No.: A7093

Basic Information

Observed MW

36kDa

Calculated MW

34kDa

Category

Primary antibody

Applications

ELISA, WB, IF/ICC

Cross-Reactivity

Human, Mouse, Rat

Background

The protein encoded by this gene is a cytosolic protein which contains a phosphotyrosine binding (PTD) domain. The PTD domain has been found to interact with the cytoplasmic tail of the LDL receptor. Mutations in this gene lead to LDL receptor malfunction and cause the disorder autosomal recessive hypercholesterolaemia.

Recommended Dilutions

WB	1:500 - 1:1000
IF/ICC	1:50 - 1:100

Immunogen Information

Gene ID

26119

Swiss Prot

Q5SW96

Immunogen

Recombinant fusion protein containing a sequence corresponding to amino acids 59-308 of human LDLRAP1 (NP_056442.2).

Synonyms

ARH; ARH1; ARH2; FHCB1; FHCB2; FHCL4; LDLRAP1

Contact

 | 400-999-6126

 | cn.market@abclonal.com.cn

 | www.abclonal.com.cn

Product Information

Source

Rabbit

Isotype

IgG

Purification

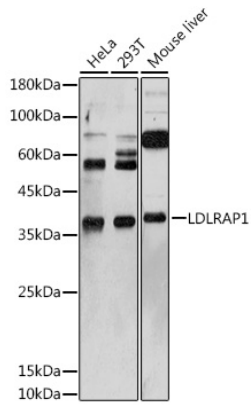
Affinity purification

Storage

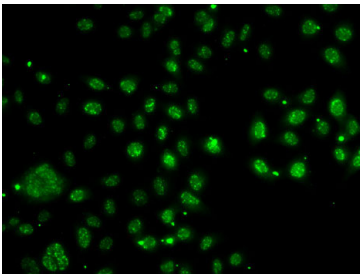
Store at -20°C. Avoid freeze / thaw cycles.

Buffer: PBS with 0.05% proclin300, 50% glycerol, pH7.3.

Validation Data



Western blot analysis of extracts of various cell lines, using LDLRAP1 antibody (A7093) at 1:1000 dilution.
Secondary antibody: HRP Goat Anti-Rabbit IgG (H+L) (AS014) at 1:10000 dilution.
Lysates/proteins: 25µg per lane.
Blocking buffer: 3% nonfat dry milk in TBST.
Detection: ECL Basic Kit (RM00020).
Exposure time: 180s.



Immunofluorescence analysis of A-549 cells using LDLRAP1 antibody (A7093).