

# METTL13 Rabbit pAb

Catalog No.: A7111

## Basic Information

### Observed MW

90kDa

### Calculated MW

79kDa

### Category

Primary antibody

### Applications

ELISA, WB

### Cross-Reactivity

Human, Mouse, Rat

## Background

Predicted to enable methyltransferase activity. Involved in negative regulation of cell cycle G1/S phase transition and negative regulation of transcription by RNA polymerase II. Predicted to be located in mitochondrion and nucleus.

## Recommended Dilutions

WB 1:500 - 1:2000

## Immunogen Information

### Gene ID

51603

### Swiss Prot

Q8N6R0

### Immunogen

Recombinant fusion protein containing a sequence corresponding to amino acids 540-699 of human METTL13 (NP\_057019.3).

### Synonyms

feat; DFNM1; CGI-01; DFNB26; DFNB26M; KIAA0859; EEF1AKNMT; 5630401D24Rik; METTL13

## Contact

☎ | 400-999-6126

✉ | [cn.market@abclonal.com.cn](mailto:cn.market@abclonal.com.cn)

🌐 | [www.abclonal.com.cn](http://www.abclonal.com.cn)

## Product Information

### Source

Rabbit

### Isotype

IgG

### Purification

Affinity purification

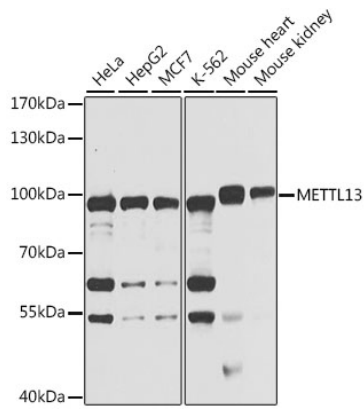
### Storage

Store at -20°C. Avoid freeze / thaw cycles.

Buffer: PBS with 0.02% sodium azide, 50% glycerol, pH7.3.

## Validation Data

---



Western blot analysis of extracts of various cell lines, using METTL13 antibody (A7111) at 1:1000 dilution.  
Secondary antibody: HRP Goat Anti-Rabbit IgG (H+L) (AS014) at 1:10000 dilution.  
Lysates/proteins: 25 $\mu$ g per lane.  
Blocking buffer: 3% nonfat dry milk in TBST.  
Detection: ECL Basic Kit (RM00020).  
Exposure time: 10s.