

PINK1 Rabbit pAb

Catalog No.: A7131 **36 Publications**

Basic Information

Observed MW

60kDa

Calculated MW

63kDa

Category

Primary antibody

Applications

ELISA, WB, IF/ICC

Cross-Reactivity

Human, Mouse, Rat

Background

This gene encodes a serine/threonine protein kinase that localizes to mitochondria. It is thought to protect cells from stress-induced mitochondrial dysfunction. Mutations in this gene cause one form of autosomal recessive early-onset Parkinson disease.

Recommended Dilutions

WB 1:1000 - 1:5000

IF/ICC 1:50 - 1:200

Immunogen Information

Gene ID

65018

Swiss Prot

Q9BXM7

Immunogen

Recombinant fusion protein containing a sequence corresponding to amino acids 282-581 of human PINK1 (NP_115785.1).

Synonyms

BRPK; PARK6; PINK1

Contact

☎ | 400-999-6126

✉ | cn.market@abclonal.com.cn

🌐 | www.abclonal.com.cn

Product Information

Source

Rabbit

Isotype

IgG

Purification

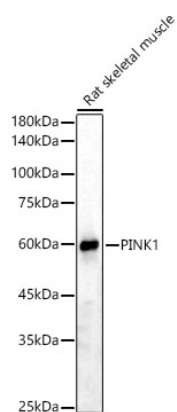
Affinity purification

Storage

Store at -20°C. Avoid freeze / thaw cycles.

Buffer: PBS with 0.05% proclin300, 50% glycerol, pH7.3.

Validation Data



Western blot analysis of lysates from Rat skeletal muscle, using PINK1 Rabbit pAb (A7131) at 1:2000 dilution.

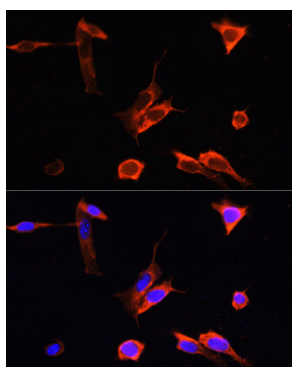
Secondary antibody: HRP Goat Anti-Rabbit IgG (H+L) (AS014) at 1:10000 dilution.

Lysates/proteins: 25µg per lane.

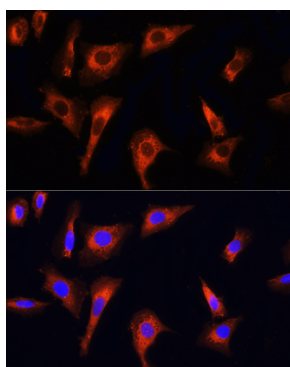
Blocking buffer: 3% nonfat dry milk in TBST.

Detection: ECL Basic Kit (RM00020).

Exposure time: 90s.



Immunofluorescence analysis of NIH-3T3 cells using PINK1 Rabbit pAb (A7131) at dilution of 100 (40x lens). Secondary antibody: Cy3 Goat Anti-Rabbit IgG (H+L) (AS007) at 1:500 dilution. Blue: DAPI for nuclear staining.



Immunofluorescence analysis of U-2 OS cells using PINK1 Rabbit pAb (A7131) at dilution of 100 (40x lens). Secondary antibody: Cy3 Goat Anti-Rabbit IgG (H+L) (AS007) at 1:500 dilution. Blue: DAPI for nuclear staining.