

# ART5 Rabbit pAb

Catalog No.: A7146

## Basic Information

### Observed MW

37kDa

### Calculated MW

32kDa

### Category

Primary antibody

### Applications

ELISA, WB

### Cross-Reactivity

Human, Mouse, Rat

## Background

The protein encoded by this gene belongs to the ARG-specific ADP-ribosyltransferase family. Proteins in this family regulate the function of target proteins by attaching ADP-ribose to specific amino acid residues in their target proteins. The mouse homolog lacks a glycosylphosphatidylinositol-anchor signal sequence and is predicted to be a secretory enzyme. Several transcripts encoding different isoforms have been found for this gene.

## Recommended Dilutions

WB 1:500 - 1:2000

## Immunogen Information

### Gene ID

116969

### Swiss Prot

Q96L15

### Immunogen

Recombinant fusion protein containing a sequence corresponding to amino acids 23-200 of human ART5 (NP\_443750.2).

### Synonyms

ARTC5; ART5

## Contact

☎ | 400-999-6126

✉ | [cn.market@abclonal.com.cn](mailto:cn.market@abclonal.com.cn)

🌐 | [www.abclonal.com.cn](http://www.abclonal.com.cn)

## Product Information

### Source

Rabbit

### Isotype

IgG

### Purification

Affinity purification

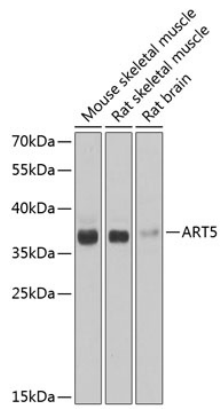
### Storage

Store at -20°C. Avoid freeze / thaw cycles.

Buffer: PBS with 0.02% sodium azide, 50% glycerol, pH 7.3.

## Validation Data

---



Western blot analysis of extracts of various cell lines, using ART5 antibody (A7146) at 1:1000 dilution.  
Secondary antibody: HRP Goat Anti-Rabbit IgG (H+L) (AS014) at 1:10000 dilution.  
Lysates/proteins: 25µg per lane.  
Blocking buffer: 3% nonfat dry milk in TBST.  
Detection: ECL Basic Kit (RM00020).  
Exposure time: 30s.