

COMMD1 Rabbit pAb

Catalog No.: A7149

1 Publications

Basic Information

Observed MW

Refer to figures

Calculated MW

21kDa

Category

Primary antibody

Applications

IF/ICC,ELISA

Cross-Reactivity

Human, Mouse, Rat

Background

Enables several functions, including phosphatidylinositol-3,4-bisphosphate binding activity; phospholipid binding activity; and protein homodimerization activity. Involved in several processes, including Golgi to plasma membrane transport; negative regulation of protein localization to cell surface; and regulation of cellular protein metabolic process. Acts upstream of or within negative regulation of NF-kappaB transcription factor activity. Located in cytosol; endosome; and nucleoplasm. Part of Cul2-RING ubiquitin ligase complex.

Recommended Dilutions

IF/ICC 1:50 - 1:100

ELISA Recommended starting concentration is 1 µg/mL. Please optimize the concentration based on your specific assay requirements.

Immunogen Information

Gene ID

150684

Swiss Prot

Q8N668

Immunogen

Recombinant protein (or fragment). This information is considered to be commercially sensitive.

Synonyms

MURR1; C2orf5; COMMD1

Contact

☎ | 400-999-6126

✉ | cn.market@abclonal.com.cn

🌐 | www.abclonal.com.cn

Product Information

Source

Rabbit

Isotype

IgG

Purification

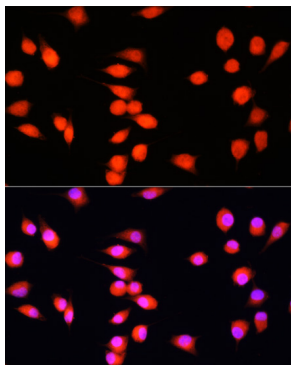
Affinity purification

Storage

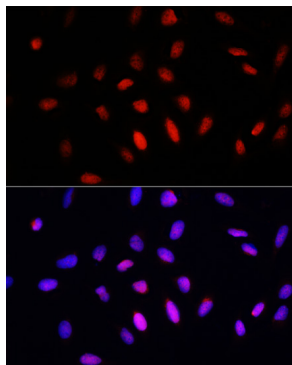
Store at -20°C. Avoid freeze / thaw cycles.

Buffer: PBS containing 50% glycerol, preserved with proclin300 or sodium azide (as specified on the Certificate of Analysis), pH 7.3.

Validation Data



Immunofluorescence analysis of L929 cells using COMMD1 Rabbit pAb (A7149) at dilution of 1:100. Blue: DAPI for nuclear staining.



Immunofluorescence analysis of U2OS cells using COMMD1 Rabbit pAb (A7149) at dilution of 1:100. Blue: DAPI for nuclear staining.